

Carrelli autoportanti

Cantilever gate carriages
Rollenapparate für freitragende Schiebetore
Chariots pour portail autoportants
Carros para cancelas autoportantes
Тележки для раздвижных ворот



A



- 41 B
- 41 B/SPEC
- 41 P
- 41 P/SPEC
- 41 H
- 41 H/SPEC
- 41 G
- 41 G/SPEC
- 41 G-A
- 41 SM

B



- 2 RP
- 4 RP
- 4 RM
- 4 RG
- 2 RG
- 4 RM R
- 4 RG R

C



- G-A
- GIPI 4 RP / Z
- GIPI 5 RG / Z
- GIPI 5 RH / Z
- GIPI 6 RM / Z
- GIPI 4 RM2
- GIPI 4 RMC2
- GIPI 4 RSM

D



- 153/B
- 153/P
- 153/G
- 153/H

E



- PF/B
- PF/P
- PF/G

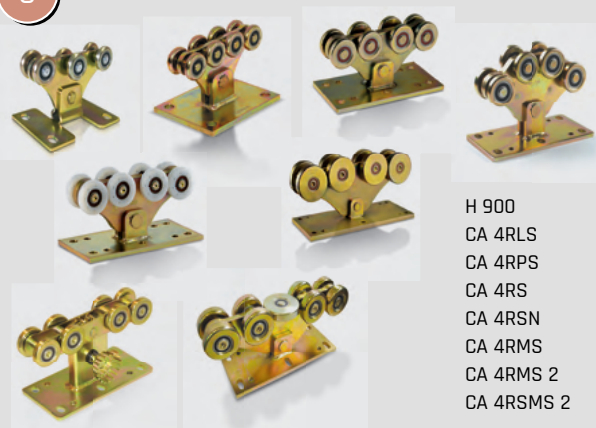


F



- 50 B
- 50 BL
- 50 P
- 50 PL
- 50 H
- 50 G
- 50 GL
- 50 SM
- 50 R
- 50 RL

G



- H 900
- CA 4RLS
- CA 4RPS
- CA 4RS
- CA 4RSN
- CA 4RMS
- CA 4RMS 2
- CA 4RSMS 2

H



DIMA

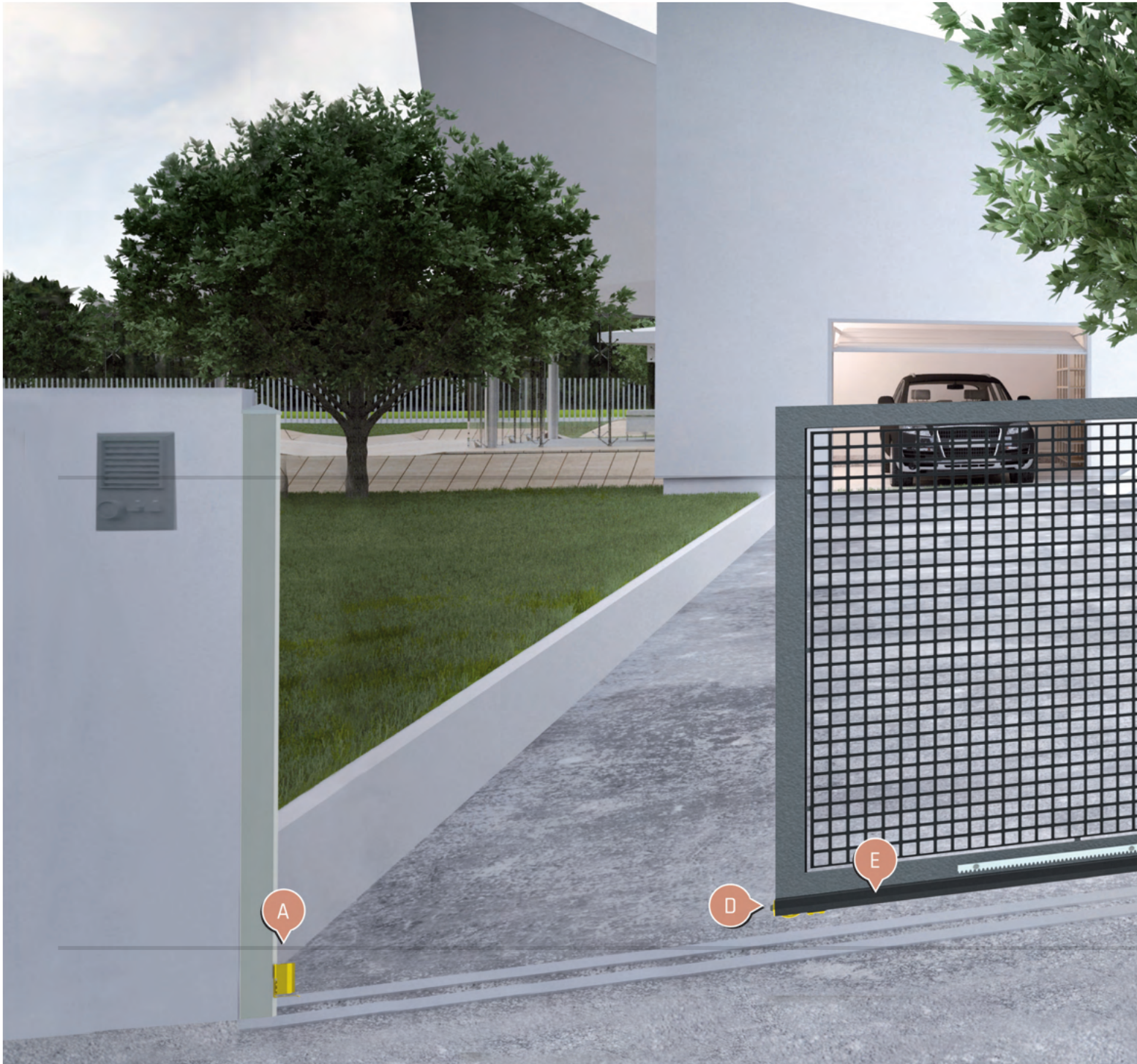
DIMA permette il perfetto allineamento tra i 2 carrelli, eliminando ogni errore di montaggio.

DIMA enables the perfect alignment of the 2 carriages, thus eliminating any installation error

I



- GLOECK
- GLOECK 40
- GLOECK 4060



KIT

2x 50L

1x 2RL

2x CA4 RLS

2x 41BL

2x



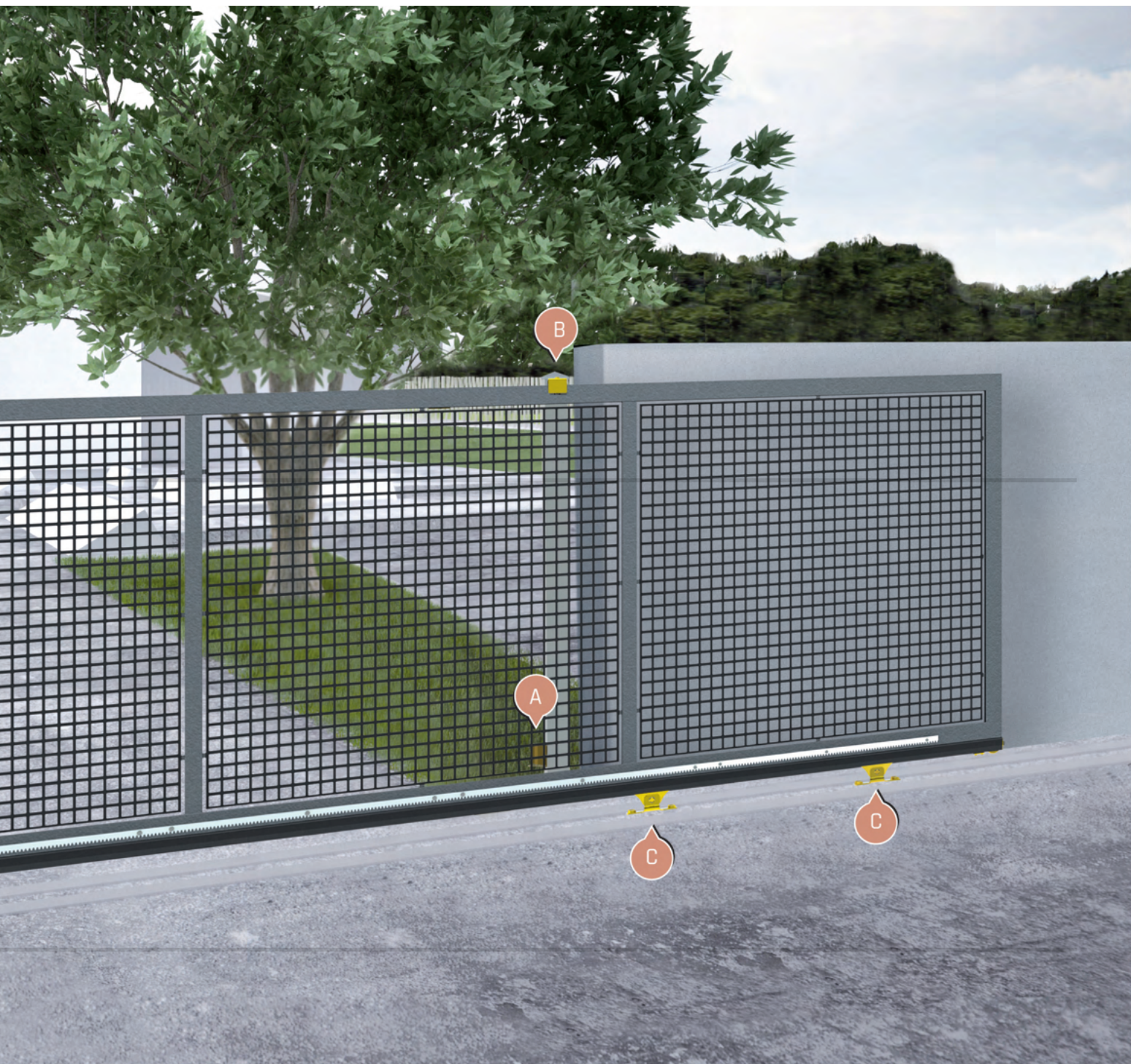
50 L

A

E

D

A



B

C

D

E

1x



2 RL

2x

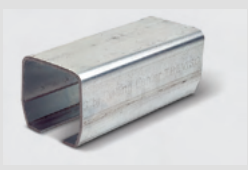


CA4 RLS

2x

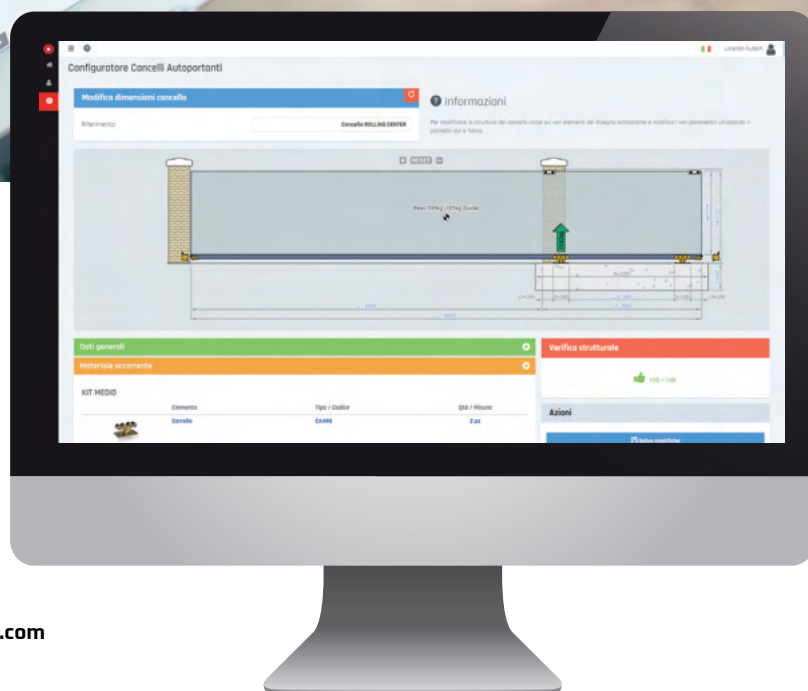


41 BL



ART. NON IN KIT

GIPI 4 RP/Z sp. 3,5
GIPI 4 RL6/Z sp. 3



Online il nuovo configuratore per cancelli autoportanti

Compila il modulo di registrazione su www.rollingcenter.com
Accedi e configura il tuo cancello nei minimi dettagli.

UK

The new cantilever gate configurator is online.
Enter your data in the registration form on www.rollingcenter.com
Log in and configure your gate in details.

D

Der neue Konfigurator für freitragende Schiebetore ist online.
Füllen Sie das Formular unter www.rollingcenter.com aus.
Loggen Sie sich ein und konfigurieren Sie Ihr Tor bis ins kleinste Detail.

F

Le nouveau configurateur pour portails porte-à-faux est en ligne.
Enregistrez-vous sous www.rollingcenter.com
Connectez-vous et configurez votre portail dans les moindres détails.

E

Un nuevo configurador para puertas correderas autoportantes está en línea.
Complete el formulario en www.rollingcenter.com
Inicie sesión y configure su puerta en detalle.

RUS

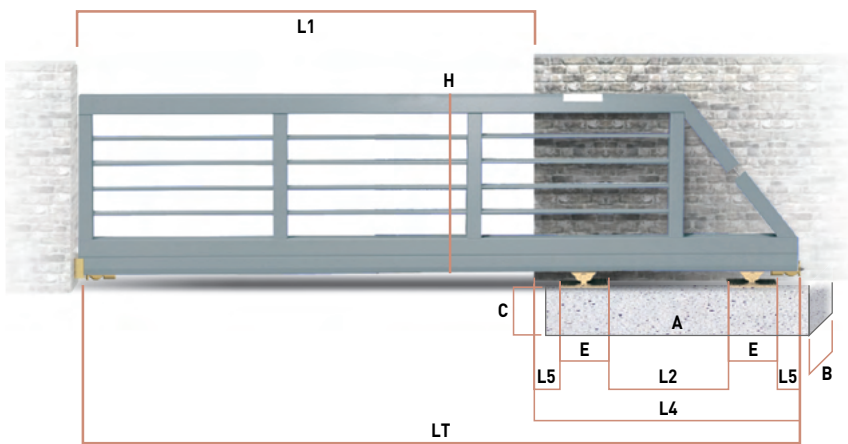
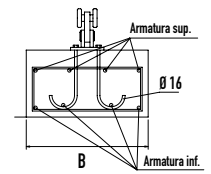
Новый конфигуратор консольных ворот находится в сети.
Введите свои данные в регистрационную форму на www.rollingcenter.com
Войдите и настройте ваши ворота в деталях.



Articolo - Article		L1	Peso max cancello Gate max weight	Abbinabile Combining	📦	
Riferimento - Reference	Max ML				N°	
KIT CA 4 RLS	KAPLE GTO	3,5	180	GIPI 4 RL / RLZ	1	10,4
KIT CA 4 RLS	KAPLE GTO	4	250	GIPI 4 RP / RPZ	1	10,4

- I Kit carrello "Leggero"
- UK "Light" carriage kit
- D "Leichte" Rollapparate
- F Kit chariot "Léger"
- E Kit carro "Ligero"
- RUS Комплект кареток легкий

Peso max cancello Gate max weight	L1 (mt)	L2 (mt)	L4 (mt)	L5 (mt)	LT (mt)	H (mt)	E (mt)	A (mt)	B (mt)	C (mt)	Portata max carrello Carriage strength	Fondazione Armatura	
180	2	0,82	1,5	0,15	3,5	1,7	0,19	1,5	0,6	0,5	360	4 Ø 12	4 Ø 12
180	2,5	0,82	1,5	0,15	4,0	1,7	0,19	1,5	0,6	0,5	360	4 Ø 12	4 Ø 12
180	3	0,82	1,5	0,15	4,5	1,7	0,19	1,5	0,6	0,5	360	4 Ø 12	4 Ø 12
180	3,5	0,82	1,5	0,15	5,0	1,7	0,19	1,5	0,6	0,5	360	4 Ø 12	4 Ø 12
180	4	1,32	2	0,15	6,0	1,7	0,19	1,8	0,6	0,5	360	4 Ø 12	4 Ø 12



$LT = L1 + L4$

$L2 = 30\% \text{ di } L1$

$L4 = L2 + (E + L5) \times 2$

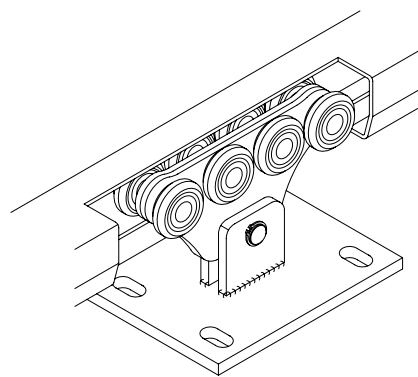
Accessori Abbinabili / Combining accessories

CA 4 RLS	x2	41 BL	x2
50 L	x2	GIPI4RP/RL	*
2RL	x1	Glock	x1

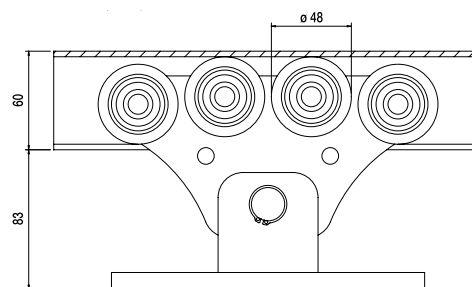
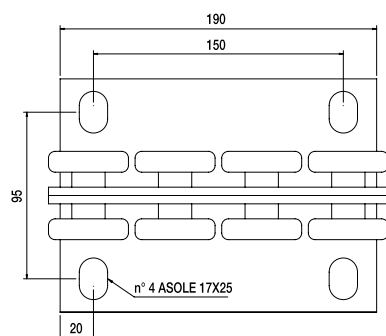
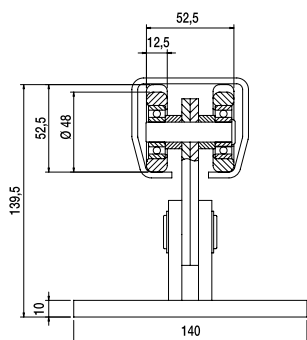
* Lunghezza guida variabile
Variable track length



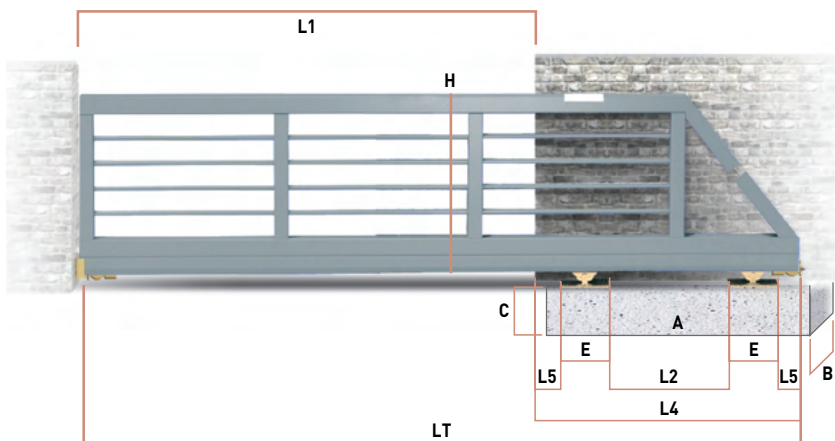
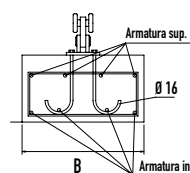
- I Carrello "Basic" per cancelli autoportanti
- UK "Basic" carriage for cantilever gates
- D "Basic" Rollenapparat für freitragende Schiebetore
- F Chariot "Basic" pour portails autoportants
- E Carro "Basic" para puertas autoportantes
- RUS Тележка для консольных сдвижных ворот базовая



Articolo - Article	L1	Peso max cancello Gate max weight	Abbinabile Combining	
Riferimento - Reference	Max ML			N°
CA 4 RPS	LT 00 50 80	3 - 6	450 kg	GIPI 4 RP / RPZ
				2
				9,58



Peso max cancello Gate max weight	L1 (mt)	L2 (mt)	L4 (mt)	L5 (mt)	LT (mt)	H (mt)	E (mt)	A (mt)	B (mt)	C (mt)	Portata max carrello Carriage strength	Fondazione Armatura	
450 kg	3,0	0,9	1,66	0,20	4,7	1,7	0,19	1,8	0,6	0,5	900 kg	4 Ø 12	4 Ø 12
450 kg	4,0	1,2	1,96	0,20	6,0	1,7	0,19	2	0,6	0,5	900 kg	4 Ø 12	4 Ø 12
450 kg	5,0	1,5	2,26	0,20	7,3	1,7	0,19	2,3	0,8	0,5	900 kg	4 Ø 12	4 Ø 12
450 kg	6,0	1,8	2,56	0,20	8,6	1,7	0,19	2,6	0,8	0,5	900 kg	4 Ø 12	4 Ø 12



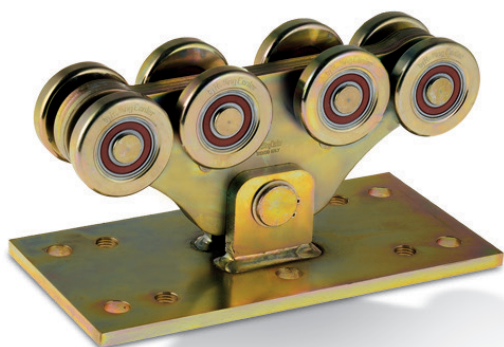
Accessori Abbinabili / Combining accessories

CA 4 RPS	x2	41 B	x2
50 B	x2	GIPI4RP/Z	*
* Lunghezza guida variabile Variable track length			
2RP P - 4RP P	x2	Gloeck	x1

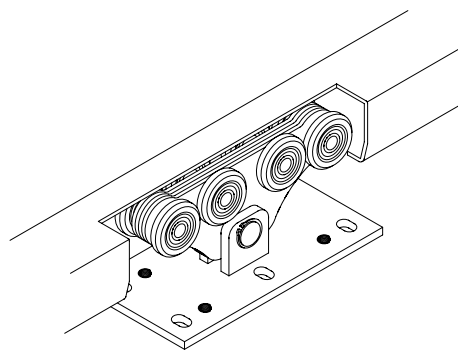
$LT = L1 + L4$

$L2 = 30\% \text{ di } L1$

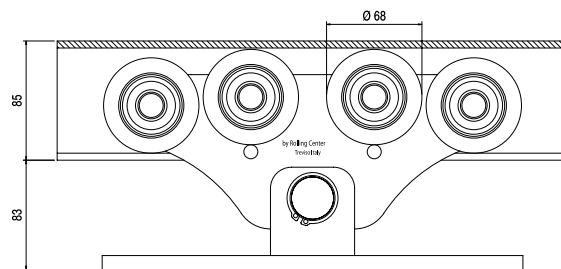
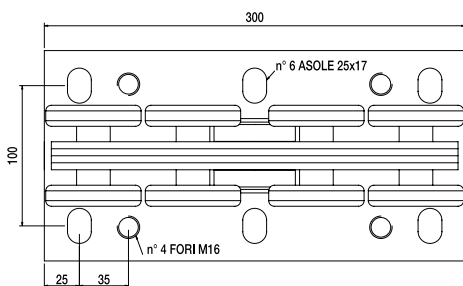
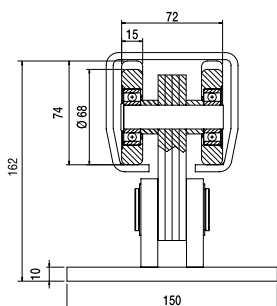
$L4 = L2 + (E + L5) \times 2$



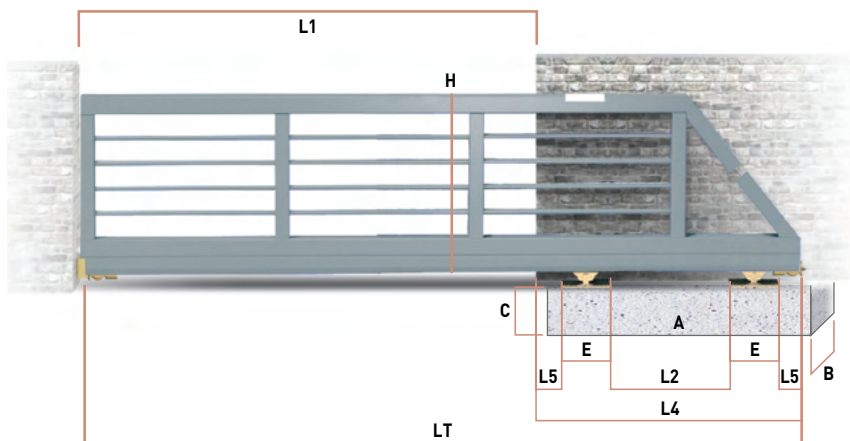
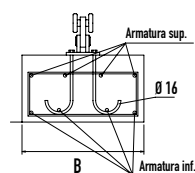
- I Carrello "Medio" per cancelli autoportanti
- UK "Medio" carriage for cantilever gates
- D "Medio" Rollenapparat für freitragende Schiebetore
- F Chariot "Medio" pour portails autoportants
- E Carro "Medio" para puertas autoportantes
- RUS Средняя тележка для раздвижных ворот



Articolo - Article		L1	Peso max cancello Gate max weight	Abbinabile Combining	
Riferimento - Reference		Max ML			N°
CA 4 RS	LT 00 80 80	8	600	GIPI 5 RG / GZ	2 21



Peso max cancello Gate max weight	L1 (mt)	L2 (mt)	L4 (mt)	L5 (mt)	LT (mt)	H (mt)	E (mt)	A (mt)	B (mt)	C (mt)	Portata max carrello Carriage strength	Fondazione Armatura	
600	4,0	1,20	2,2	0,2	6,2	1,7	0,3	2,5	0,6	0,5	1200	4 Ø 12	4 Ø 12
600	5,0	1,50	2,5	0,2	7,5	1,7	0,3	2,8	0,6	0,5	1200	4 Ø 12	4 Ø 12
600	6,0	1,80	2,8	0,2	8,8	1,7	0,3	3,2	0,6	0,5	1200	4 Ø 12	4 Ø 12
600	7,0	2,10	3,1	0,2	10,1	1,7	0,3	3,7	0,6	0,5	1200	7 Ø 12	4 Ø 12
600	8,0	2,40	3,4	0,2	11,4	1,7	0,3	3,7	0,6	0,5	1200	7 Ø 12	4 Ø 12



LT = L1+L4

L2 = 30% di L1

L4 = L2+(E+L5) x2

Accessori Abbinabili / Combining accessories

CA 4 RS  x2	41 P  x2
50 P  x2	GIPI 5 RG/Z  *
4RM P  x2	Gloeck  x1

* Lunghezza guida variabile
Variable track length



KITMOTOG NEW

Kit carrello "MotoG" con sistema di aggancio adattabile ai diversi modelli di motore presenti sul mercato.

- ✓ Adatto a cancelli fino a 600kg di peso e 8 metri di apertura
- ✓ Kit composto da 2 carrelli: trainante + condotto
- ✓ Guida GIPI5RG/GZ con cremagliera 44, 22x22 mod. 4
- ✓ Per cancelli autoportanti predisposto per cremagliera interna



"MotoG" trolley kit with connection system adaptable to the different automation models available on the market.

- ✓ Suitable for gates up to 600kg in weight and 8 meters in width
- ✓ Kit consisting of 2 trolleys: pulling + driven
- ✓ Track GIPI5RG/GZ with rack 44, 22x22 mod. 4
- ✓ For cantilever gates with internal dental rack

"MotoG" Trolley-Kit mit Haken-System anpassbar an die verschiedenen auf dem Markt vorhandenen Antriebe.

- ✓ Geeignet für bis zu 600 kg Torgewicht und 8 Meter Toröffnung.
- ✓ Kit bestehend aus 2 Wagen: ein Antreibendes und ein Geführtes
- ✓ Unterholm GIPI5RG/GZ mit Zahnstange 44, 22x22 mod. 4
- ✓ Für freitragende Tore mit interner Zahnstange

Kit trolley "MotoG" avec système d'accrochage adaptable aux différents modèles de automatisme disponibles sur le marché.

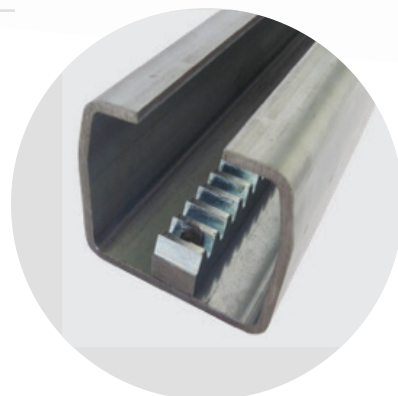
- ✓ Convenable pour des portails jusqu'à 600 kg de poids et 8 mètres de largeur
- ✓ Kit composé par 2 chariots: conduite + entraînement
- ✓ Rail GIPI5RG/GZ avec crémaillère 44, 22x22 mod. 4
- ✓ Pour portails porte-à-faux prédisposés pour crémaillère interne

Kit de carros "MotoG" con sistema de enganche adaptable a los diferentes modelos de motores en el mercado.

- ✓ Adecuado para puertas de hasta 600 kg de peso y 8 metros de pasaje
- ✓ Kit compuesto de 2 carros: arrastrante + remolcado
- ✓ Guía GIPI5RG/GZ con cremallera 44, 22x22 mod. 4
- ✓ Para puertas autoportantes predisposto para cremalleras ocultas

Комплект суппорта "MotoG" с системой зацепления, адаптируемой к различным моделям двигателей, имеющихся на рынке.

- ✓ Пригоден к воротам весом до 600 кг и 8 метрам открыва
- ✓ Комплект состоит из 2 суппортов: ведущего + ведомого
- ✓ Направляющая GIPI5RG/GZ с зубчатой рейкой 44, 22x22 мод.4
- ✓ Для самонесущих ворот подготовлены для внутренней зубчатой рейки



KITMOTOG accessori



- ▶ Z12 M4: RT0412PS
- ▶ Z15 M4: RT0415PS
- ▶ Z16 M4: RT0416PS
- ▶ Z17 M4: RT0417PS
- ▶ Z18 M4: RT0418PS
- ▶ Z20 M4: RT0420PS

Sistema per aggancio motore disponibile in 6 soluzioni di fissaggio.

Automation coupling system available with 6 fixing solutions.

Motor-Kupplungssystem in 6 verschiedenen Befestigungslösungen erhältlich.

Système d'accouplement au moteur disponible en 6 solutions de fixation.

Sistema de acoplamiento al motor disponible en 6 soluciones de fijación.

Система сцепления с двигателем доступна в 6 крепежных решениях.



Aggancio diretto al motore con linguetta tipo DIN6885A 8x7x18

Direct connection to the automation with key DIN6885A 8x7x18

Direkte Verbindung zum Motor mit Passfedern DIN6885A 8x7x18

Connexion directe au moteur avec clavette DIN6885A 8x7x18

Conexión directa al motor con claveta DIN6885A 8x7x18

Прямое подключение к двигателю при помощи шпонки типа DIN6885A 8x7x18



DIMA2 per facilitare la foratura della guida ed il fissaggio della cremagliera interna, tramite viti M6.

DIMA2 to facilitate the drilling of the track and the fixing of the internal dental rack by using M6 screws.

DIMA2 um das Bohren des Unterholms und die Befestigung der inneren Zahnstange mit M6-Schrauben zu erleichtern.

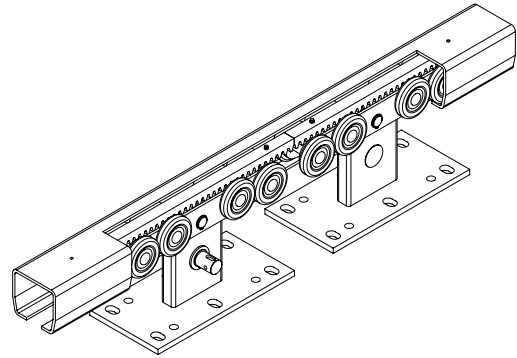
DIMA2 pour faciliter le perçage du rail et la fixation de la crémaillère interne à l'aide de vis M6.

DIMA2 para facilitar el taladrado del perfil y la fijación de la cremallera oculta utilizando tornillos M6.

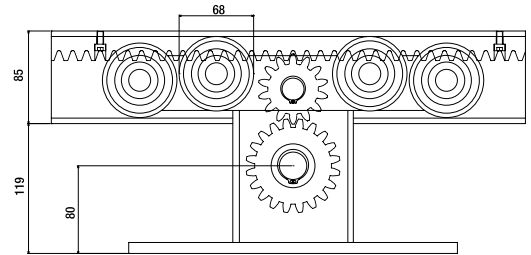
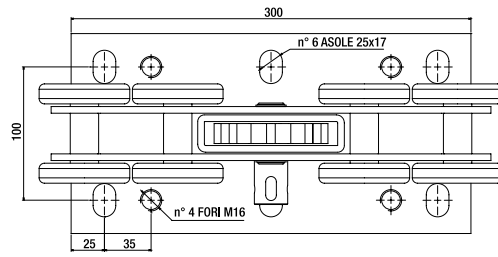
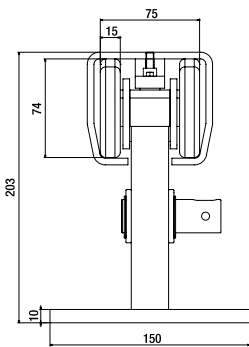
DIMA2 для облегчения сверления направляющей и фиксации внутренней зубчатой рейки с помощью винтов M6



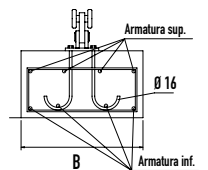
- I** Kit carrello "MotoG" per cancelli autoportanti predisposto per cremagliera interna
- UK** "MotoG" trolley kit for cantilever gates with internal dental rack
- D** "MotoG" Trolley-Kit prädisponiert für freitragende Tore mit interner Zahnstange
- F** Kit de chariots "MotoG" pour portails porte-à-faux prédisposés pour crémaillère interne
- E** Kit de carros "MotoG" para puertas autoportantes predisposto para cremalleras ocultas
- RUS** Комплект суппорта "MotoG" для самонесущих ворот, подготовленный для внутренней зубчатой рейки.



Articolo - Article	L1	Peso max cancello Gate max weight	Abbinabile Combining			
Riferimento - Reference	Max ML			N°		
KIT MOTO G	KA PM OT GT	8	600	GIPI5RG/GZ + 44	1	19,5

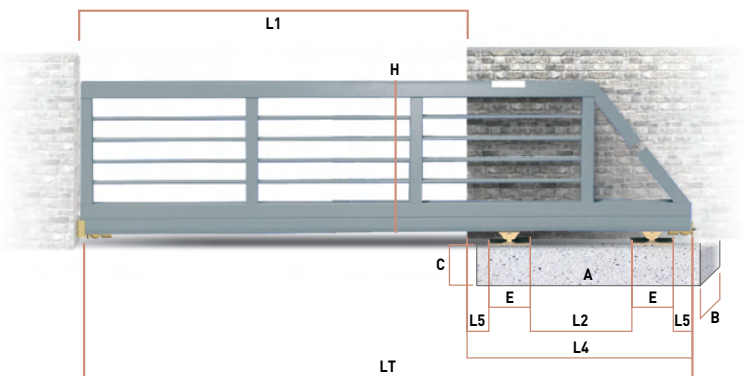


Peso max cancello Gate max weight	L1 (mt)	L2 (mt)	L4 (mt)	L5 (mt)	LT (mt)	H (mt)	E (mt)	A (mt)	B (mt)	C (mt)	Portata max carrello Carriage strength	Fondazione Armatura
600	4,0	1,20	2,2	0,2	6,2	1,7	0,3	2,5	0,6	0,5	1200	4 Ø 12 4 Ø 12
600	5,0	1,50	2,5	0,2	7,5	1,7	0,3	2,8	0,6	0,5	1200	4 Ø 12 4 Ø 12
600	6,0	1,80	2,8	0,2	8,8	1,7	0,3	3,2	0,6	0,5	1200	4 Ø 12 4 Ø 12
600	7,0	2,10	3,1	0,2	10,1	1,7	0,3	3,7	0,6	0,5	1200	7 Ø 12 4 Ø 12
600	8,0	2,40	3,4	0,2	11,4	1,7	0,3	3,7	0,6	0,5	1200	7 Ø 12 4 Ø 12



Accessori Abbinabili / Combining accessories

x1 LT M0 80 80	x1 LT C0 80 80	x1 Z ...	x 44
50 P	x2 GIPI 5 RG/Z	*	41 P x2
		* Lunghezza guida variabile Variable track length	
4RM P	x2 Gloeck	x1	DIMA 2 x1



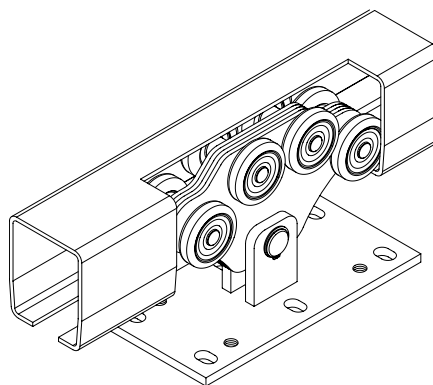
$$LT = L1 + L4$$

$$L2 = 30\% \text{ di } L1$$

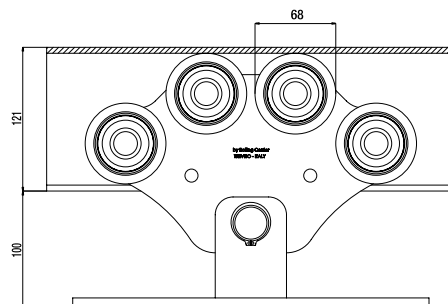
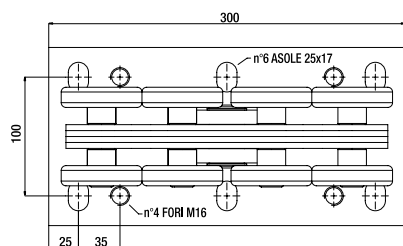
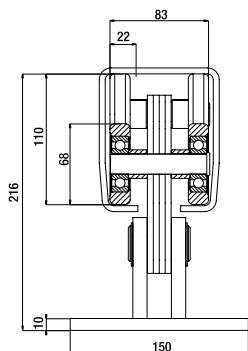
$$L4 = L2 + (E + L5) \times 2$$



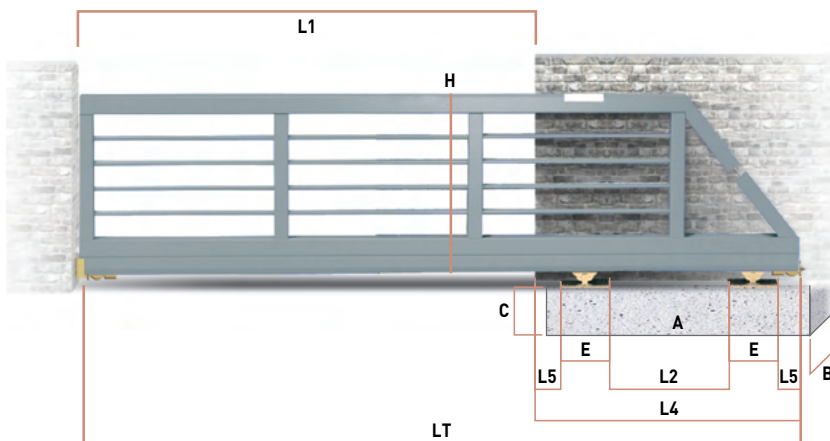
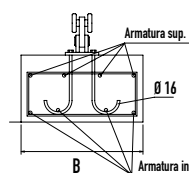
- I Carrello "H900" per cancelli autoportanti
- UK "H900" carriage for cantilever gates
- D "H900" Rollenapparat für freitragende Schiebetore
- F Chariot "H900" pour portails autoportants
- E Carro "H900" para puertas autoportantes
- RUS Тележка «H900» для раздвижных ворот со щетками



Articolo - Article	L1	Peso max cancello Gate max weight	Abbinabile Combining	
Riferimento - Reference	Max ML			N°
H 900	LT 03 70 80	10	900	GIPI 5 RH / HZ
				2
				26



Peso max cancello Gate max weight	L1 (mt)	L2 (mt)	L4 (mt)	L5 (mt)	LT (mt)	H (mt)	E (mt)	A (mt)	B (mt)	C (mt)	Portata max carrello Carriage strength	Fondazione Armatura	
900	6,0	1,80	2,8	0,2	8,8	1,7	0,3	3,1	0,6	0,5	1800	4 Ø 12	4 Ø 12
900	7,0	2,10	3,1	0,2	10,1	1,7	0,3	3,4	0,6	0,5	1800	4 Ø 12	4 Ø 12
900	8,0	2,40	3,4	0,2	11,4	1,7	0,3	3,7	0,6	0,5	1800	4 Ø 12	4 Ø 12
900	9,0	2,70	3,7	0,2	12,7	1,7	0,3	4,0	0,6	0,5	1800	7 Ø 12	4 Ø 12
900	10,0	3,00	4,0	0,2	14,0	1,7	0,3	4,3	0,6	0,5	1800	7 Ø 12	4 Ø 12



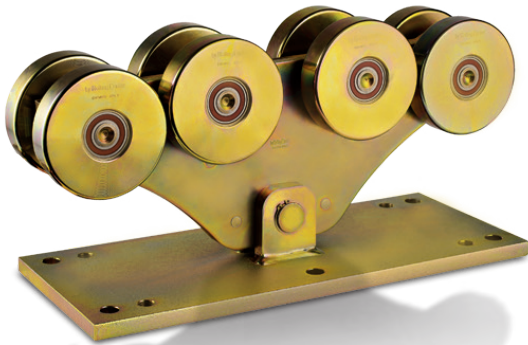
Accessori Abbinabili / Combining accessories

H 900	x2	41 H SPEC	x2
50 H	x2	41 H	153/H
4RM P	x2	GIPI5RH/Z	*
		* Lunghezza guida variabile Variable track length	
		Gloeck	x1

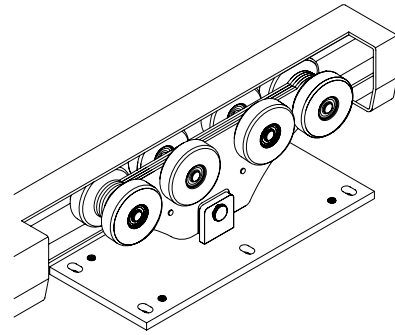
$LT = L1 + L4$

$L2 = 30\% \text{ di } L1$

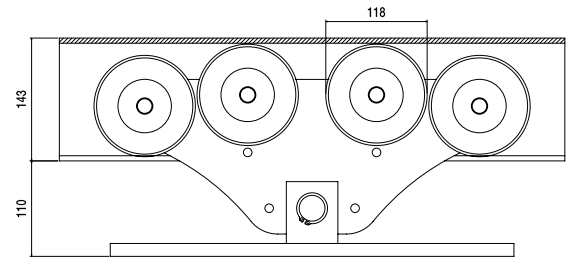
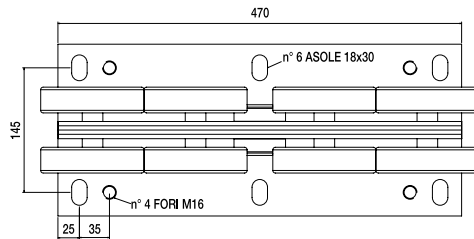
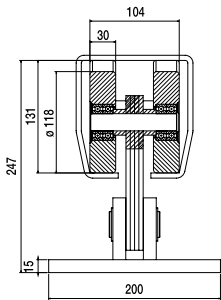
$L4 = L2 + (E + L5) \times 2$



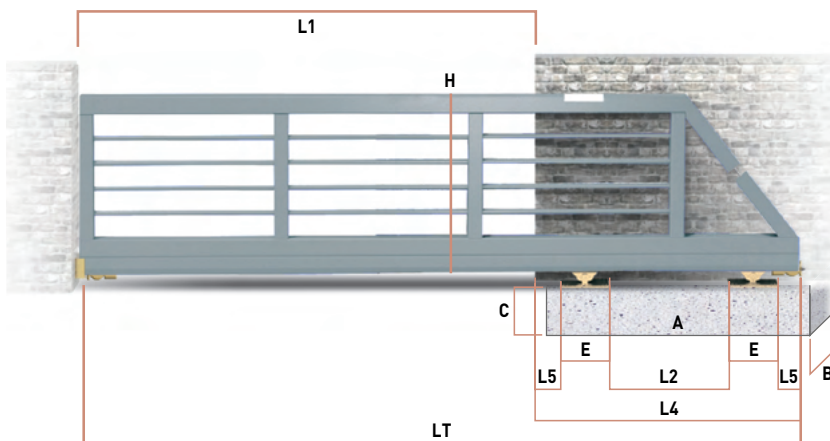
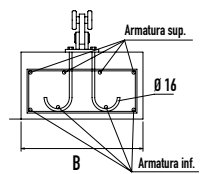
- I Carrello "Magnum" per cancelli autoportanti
- UK "Magnum" carriage for cantilever gates
- D "Magnum" Rollenapparat für freitragende Schiebetore
- F Chariot "Magnum" pour portails autoportants
- E Carro "Magnum" para puertas autoportantes
- RUS Тележка «Магнум» для раздвижных ворот



Articolo - Article		L1	Peso max cancello Gate max weight	Abbinabile Combining	
Riferimento - Reference		Max ML			N°
CA 4 RMS	LT 01 20 80	16	1200	GIPI 6 RM / MZ	1 44,6



Peso max cancello Gate max weight	L1 (mt)	L2 (mt)	L4 (mt)	L5 (mt)	LT (mt)	H (mt)	E (mt)	A (mt)	B (mt)	C (mt)	Portata max carrello Carriage strength	Fondazione Armatura	
1200	9,0	2,7	4,04	0,2	13,0	1,7	0,47	4,2	0,6	0,5	2400	6 Ø 12	4 Ø 12
1200	10,0	3,0	4,34	0,2	14,3	1,7	0,47	4,2	0,6	0,5	2400	6 Ø 12	4 Ø 12
1200	11,0	3,3	4,64	0,2	15,6	1,7	0,47	4,8	0,8	0,6	2400	7 Ø 12	4 Ø 12
1200	12,0	3,6	4,94	0,2	16,9	1,7	0,47	4,8	0,8	0,6	2400	7 Ø 12	4 Ø 12
1200	13,0	3,9	5,24	0,2	18,2	1,7	0,47	5,4	0,8	0,6	2400	9 Ø 12	4 Ø 12
1200	14,0	4,2	5,54	0,2	19,5	1,7	0,47	5,4	0,8	0,6	2400	9 Ø 12	4 Ø 12
1200	15,0	4,5	5,84	0,2	20,8	1,7	0,47	6	0,8	0,6	2400	10 Ø 12	4 Ø 12
1200	16,0	4,8	6,14	0,2	22,1	1,7	0,47	6,2	0,8	0,6	2400	10 Ø 12	4 Ø 12



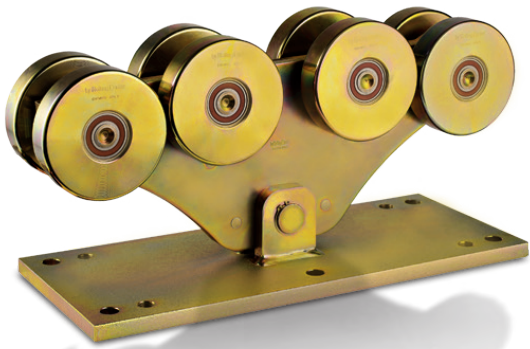
$LT = L1 + L4$

$L2 = 30\% \text{ di } L1$

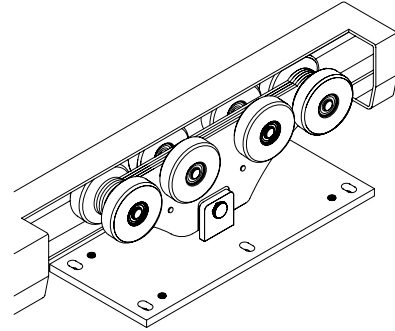
$L4 = L2 + (E + L5) \times 2$

Accessori Abbinabili / Combining accessories

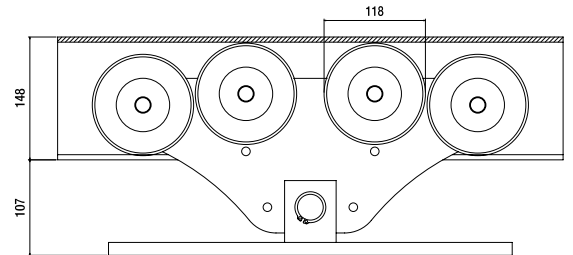
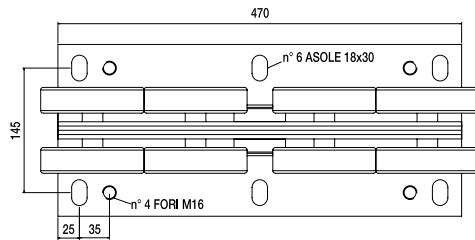
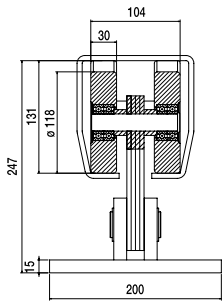
CA 4 RMS  x2	41 G  x2
50 G 	85 G  x2
	GIPI6RM/MZ  *
	* Lunghezza guida variabile Variable track length
2RGZ / 4RG P  x2	Gloeck  x1



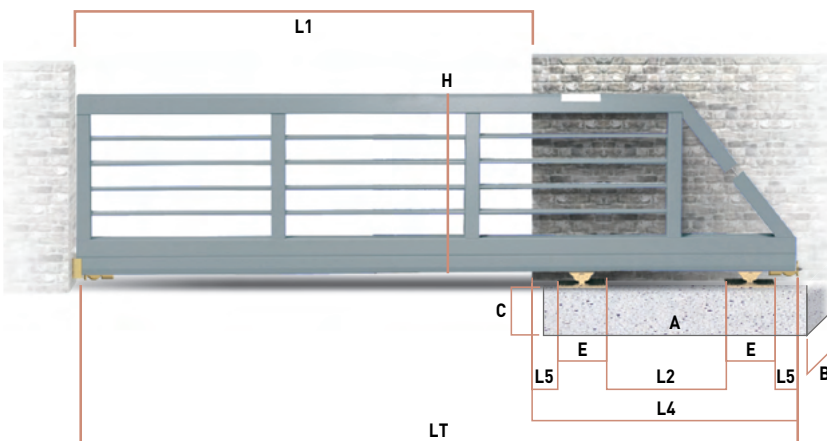
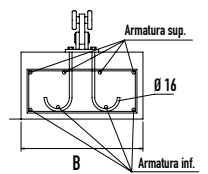
- I Carrello "Magnum2" per cancelli autoportanti
- UK "Magnum2" carriage for cantilever gates
- D "Magnum2" Rollenapparat für freitragende Schiebetore
- F Chariot "Magnum2" pour portails autoportants
- E Carro "Magnum2" para puertas autoportantes
- RUS Тележка «Магнум2» для раздвижных ворот



Articolo - Article	L1	Peso max cancello Gate max weight	Abbinabile Combining	
Riferimento - Reference	Max ML			N'
CA 4 RMS2	LT 01 20 82	18	2200	GIPI 4 RM2 / M2C
				1 45,2



Peso max cancello Gate max weight	L1 (mt)	L2 (mt)	L4 (mt)	L5 (mt)	LT (mt)	H (mt)	E (mt)	A (mt)	B (mt)	C (mt)	Portata max carrello Carriage strength	Fondazione Armatura	
2200	9,0	2,7	4,04	0,2	13,0	1,7	0,47	4,2	0,6	0,5	4400	6 Ø 12	4 Ø 12
2200	10,0	3,0	4,34	0,2	14,3	1,7	0,47	4,2	0,6	0,5	4400	6 Ø 12	4 Ø 12
2200	11,0	3,3	4,64	0,2	15,6	1,7	0,47	4,8	0,8	0,6	4400	7 Ø 12	4 Ø 12
2200	12,0	3,6	4,94	0,2	16,9	1,7	0,47	4,8	0,8	0,6	4400	7 Ø 12	4 Ø 12
2200	13,0	3,9	5,24	0,2	18,2	1,7	0,47	5,4	0,8	0,6	4400	9 Ø 12	4 Ø 12
2200	14,0	4,2	5,54	0,2	19,5	1,7	0,47	5,6	1	0,8	4400	9 Ø 12	4 Ø 12
2200	15,0	4,5	5,84	0,2	20,8	1,7	0,47	6	1	0,8	4400	10 Ø 12	4 Ø 12
2200	16,0	4,8	6,14	0,2	22,1	1,7	0,47	6,2	1	0,8	4400	10 Ø 12	4 Ø 12
2200	17,0	5,1	6,44	0,2	23,4	1,7	0,47	6,5	1	0,8	4400	10 Ø 12	4 Ø 12
2200	18,0	5,4	6,74	0,2	24,7	1,7	0,47	7	1	0,8	4400	10 Ø 12	4 Ø 12



$LT = L1 + L4$ $L2 = 30\% \text{ di } L1$ $L4 = L2 + (E + L5) \times 2$

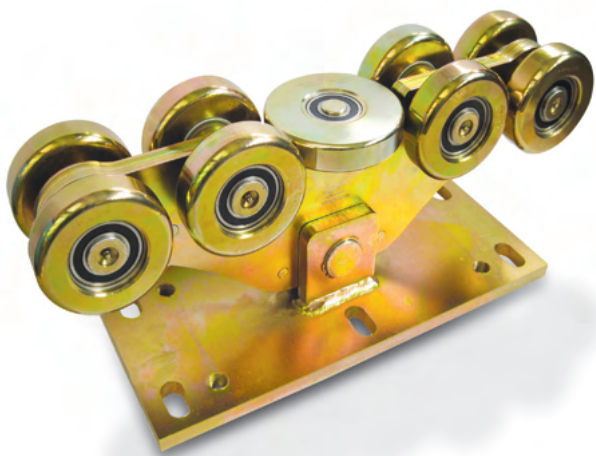
Accessori Abbinabili / Combining accessories

CA 4 RMS2	41 G
50 G	85 G
GIPI4RM2/M2C	* Lunghezza guida variabile Variable track length
2RGZ / 4RG P	Gloeck

2
SUPERMAGNUM 2



3
SUPERMAGNUM 3



I Carrello SUPERMAGNUM2 con ruota di guida per cancelli autoportanti molto pesanti

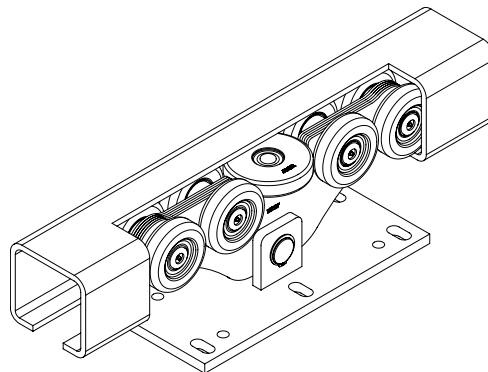
UK "SUPERMAGNUM2" carriage with guiding wheel for heavy duty cantilever gates

D "SUPERMAGNUM2" Rollenapparat mit zentraler Führungsrolle für schwere freitragende Schiebetore

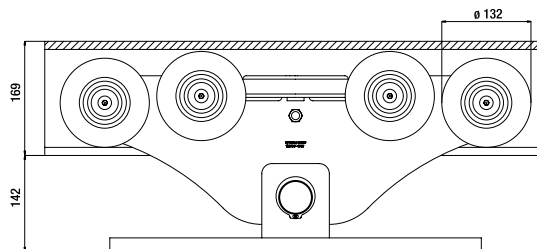
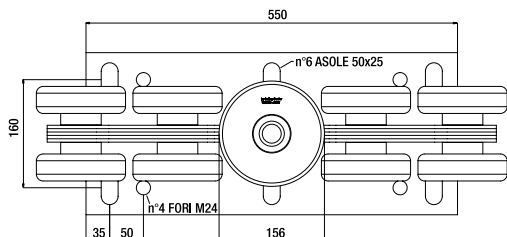
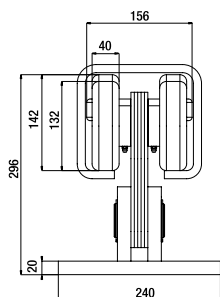
F Chariot "SUPERMAGNUM2" avec roue de guidage pour portails autoportants très lourds

E Carro "SUPERMAGNUM2" con puleggia di guida para puertas autoportantes muy pesadas

RUS Тележка «SUPERMAGNUM2» с направляющим роликом для очень тяжелых раздвижных ворот



Articolo - Article	L1	Peso max cancello Gate max weight	Abbinabile Combining	
Riferimento - Reference	Max ML			N°
CA 4 RSMS2 LT 01 35 81	30	4500	GIPI 4 RSM	1 77



Peso max cancello Gate max weight	L1 (mt)	L2 (mt)	L4 (mt)	L5 (mt)	LT (mt)	H (mt)	E (mt)	A (mt)	B (mt)	C (mt)	Portata max carrello Carriage strength
4000	15	6	7,9	0,4	22,9	1,7	0,55	ATTENZIONE* La struttura del cancello, date le dimensioni e pesi elevati, deve essere calcolata e verificata da uno studio tecnico ingegneristico, per garantirne la tenuta statica.			7000
4000	20	8	9,9	0,4	29,9	1,7	0,55		7000		
4000	25	10	11,9	0,4	36,9	1,7	0,55		7000		
4500	30	13,5	15,4	0,4	45,4	1,7	0,55		7000		

Fondazione Armatura

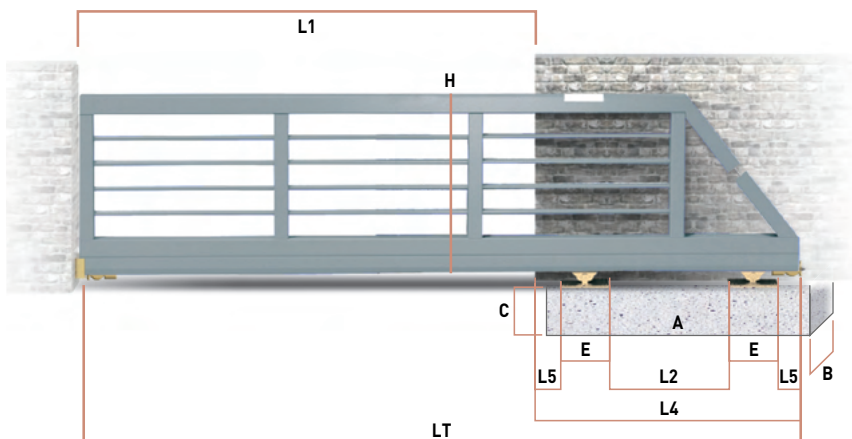
ATTENZIONE*
La struttura del cancello, date le dimensioni e pesi elevati, deve essere calcolata e verificata da uno studio tecnico ingegneristico, per garantirne la tenuta statica.

*CAUTION The structure of the gate, by the size and heavy weight, must be calculated and verified by a technical engineering study to avoid any static failure.

Accessori Abbinabili / Combining accessories

CA 4 RSMS2  x2	41 SM  x2
50 SM  x2	GIPI 4 RSM  *
Gloeck  x2	

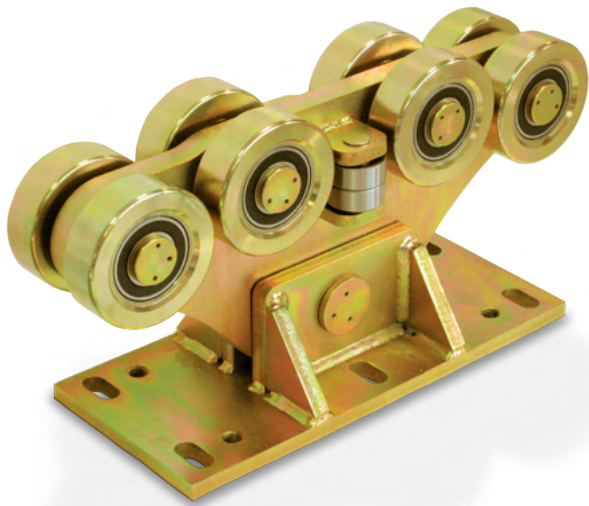
* Lunghezza guida variabile
Variable track length



$LT = L1 + L4$

$L2 = 40\% \text{ di } L1$

$L4 = L2 + (E + L5) \times 2$



I Carrello SUPERMAGNUM3 con cuscinetti di guida per cancelli autoportanti molto pesanti

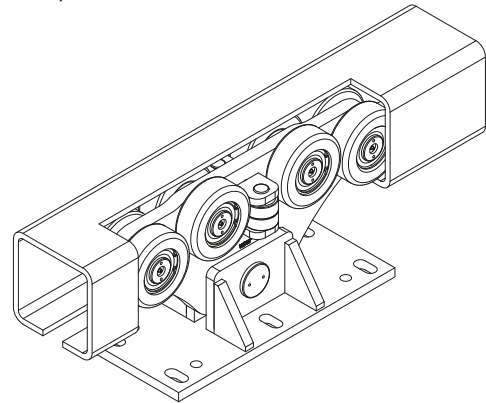
UK SUPERMAGNUM3 trolley with lateral guide bearings for very heavy cantilever gates

D SUPERMAGNUM3 Rollenbock mit seitlichen Führungskugellagern für sehr schwere freitragende Tore

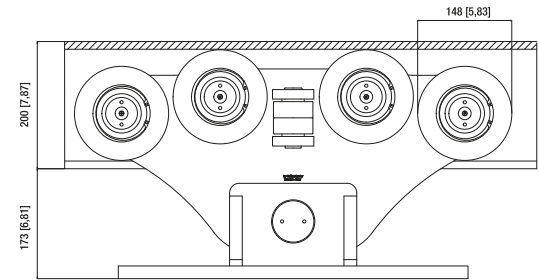
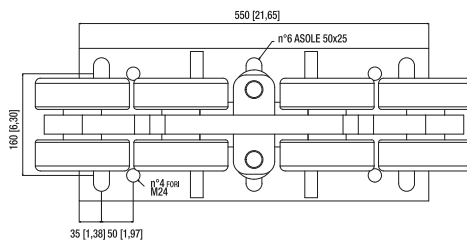
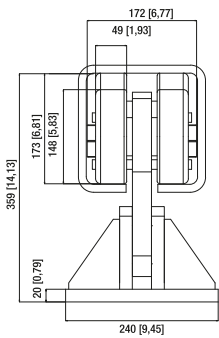
F Chariot SUPERMAGNUM3 avec roulements de guidage pour portails porte-à-faux très lourds

E Carro SUPERMAGNUM3 con rodamientos laterales de guía para puertas autoportantes muy pesadas

RUS Тележка SUPERMAGNUM3 с направляющими подшипниками для очень тяжелых раздвижных ворот



Articolo - Article		L1	Peso max cancello Gate max weight	Abbinabile Combining	Icone	
Riferimento - Reference		Max ML			N°	
SM3	LT 01 50 81	30	7000	GIPI 12 SM3	1	112

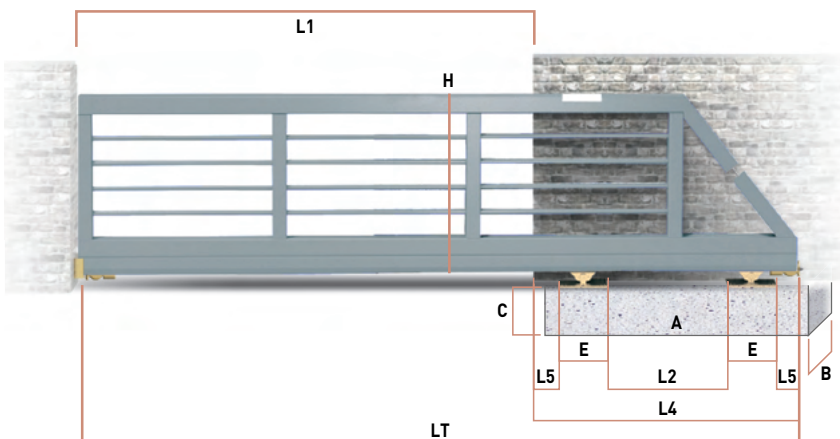


Peso max cancello Gate max weight	L1 (mt)	L2 (mt)	L4 (mt)	L5 (mt)	LT (mt)	E (mt)	A (mt)	B (mt)	C (mt)	Portata max carrello Carriage strength
7000	8	3,2	5,3	0,52	13,3	0,55	ATTENZIONE* La struttura del cancello, date le dimensioni e pesi elevati, deve essere calcolata e verificata da uno studio tecnico ingegneristico, per garantirne la tenuta statica.			17000
7000	12	4,8	6,9	0,52	18,9	0,55		17000		
7000	16	6,4	8,5	0,52	24,5	0,55		17000		
7000	20	8	10,1	0,52	30,1	0,55		17000		

Fondazione Armatura

ATTENZIONE*
La struttura del cancello, date le dimensioni e pesi elevati, deve essere calcolata e verificata da uno studio tecnico ingegneristico, per garantirne la tenuta statica.

*CAUTION The structure of the gate, by the size and heavy weight, must be calculated and verified by a technical engineering study to avoid any static failure.



$LT = L1 + L4$

$L2 = 40\% \text{ di } L1$

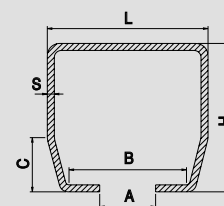
$L4 = L2 + (E + L5) \times 2$

Accessori Abbinabili / Combining accessories

<p>SM3 x2</p>	<p>41 SM3/SPEC x2</p>
<p>Gloeck x2</p>	<p>GIPI 12 SM3 *</p> <p>* Lunghezza guida variabile Variable track length</p>

Guide in acciaio per carrelli autoportanti

Steel tracks for cantilever carriages



Articolo - Article		Abbinabile Combinig	L	H	A	B	C	S	Finitura	Barra	Fasci Sheafs		
Riferimento - Reference			mm								ML	ML	
	GIPI 4 RLZ 51	BZ 69 59 00	CA4RLS SILENT L	69	59	55	52,5	25	3	Zincato	5,1	91,8	438
	GIPI 4 RL 51	BG 69 59 00		69	59	22	52,5	25	3	Grezzo	5,1	91,8	438
	GIPI 4 RPZ 3	BZ 70 60 03	CA4RLS CA4RPS SILENT L SILENT P	70	60	22	53	25	3,5	Zincato	3	96	545
	GIPI 4 RP 3	BG 70 60 03		70	60	22	53	25	3,5	Grezzo	3	96	545
	GIPI 4 RPZ 6	BZ 70 60 00		70	60	22	53	25	3,5	Zincato	6	192	1092
	GIPI 4 RP 6	BG 70 60 00		70	60	22	53	25	3,5	Grezzo	6	192	1092
	GIPI 5 RG 3	BG 94 85 03	CA4RS KIT MOTO G SILENT G	94	85	33	73	30	5	Grezzo	3	60	714
	GIPI 5 RGZ 3	BZ 94 85 03		94	85	33	73	30	5	Zincato	3	60	714
	GIPI 5 RG 6	BG 94 85 06		94	85	33	73	30	5	Grezzo	6	120	1428
	GIPI 5 RGZ 6	BZ 94 85 06		94	85	33	73	30	5	Zincato	6	120	1428
	GIPI 5 RH 3	BG 11 10 03	H 900 H 900 S	101	121	36	86	41	5	Grezzo	3	36	517
	GIPI 5 RHZ 3	BZ 11 10 03		101	121	36	86	41	5	Zincato	3	36	513
	GIPI 5 RH 6	BG 11 10 06		101	121	36	86	41	5	Grezzo	6	72	1034
	GIPI 5 RHZ 6	BZ 11 10 06		101	121	36	86	41	5	Zincato	6	72	1034
	GIPI 6 RM 3	BG 14 14 03	CA 4 RMS SILENT M	136	143	38	104	55	6	Grezzo	3	45	1020
	GIPI 6 RMZ 3	BZ 14 14 03		136	143	38	104	55	6	Zincato	3	45	1020
	GIPI 6 RM 6	BG 14 14 06		136	143	38	104	55	6	Grezzo	6	90	2034
	GIPI 6 RMZ 6	BZ 14 14 06		136	143	38	104	55	6	Zincato	6	90	2034
	GIPI 4 RM 2/3	BG 14 15 03	CA 4 RMS2	140	148	38	106	57	8	Grezzo	3	27	810
	GIPI 4 RM2C 3	BZ 14 15 C3		140	148	38	106	57	8	Zincato a caldo	3	27	810
	GIPI 4 RM 2/6	BG 14 15 06		140	148	38	106	57	8	Grezzo	6	54	1620
	GIPI 4 RM2C 6	BZ 14 15 C6		140	148	38	106	57	8	Zincato a caldo	6	54	1620
	GIPI 4 RSM	BG 17 18 00	CA 4 RSM2	184	169	74	160	-	12	Grezzo	4,5	4,5	240
	GIPI 12 SM3	BG 20 20 06	SM3	200	200	50	-	-	12,5	Grezzo	6	6	408



SUPER SILENT

Gamma di carrelli autoportanti equipaggiati con ruote in **MAPAR (MATERIALE POLIAMMIDICO AD ALTA RESISTENZA)** dotato di eccezionali caratteristiche di silenziosità, resistenza e leggerezza. Abbinabili ai nostri profili serie GIPI per garantire le stesse portate della gamma in acciaio.

Range of cantilever carriages equipped with MAPAR wheels (HIGH RESISTANCE POLYAMIDIC MATERIAL) with exceptional characteristics of noise reduction, resistance and lightness. In combination with our profiles of the GIPI series they guarantee the same capacity of the steel range.

Rollenböcke ausgestattet mit Rollen aus MAPAR (POLYAMID MIT HOHEM WIDERSTAND) für besondere Geräuschlosigkeit, Stärke und Leichtigkeit. Sie werden mit unseren Profilen der GIPI-Serie kombiniert und gewährleisten die gleiche Kapazität der Stahlrollen.

Gamme de chariots porte-à-faux équipés de roues MAPAR (MATÉRIAU POLYAMIDIQUE HAUTE RÉSISTANCE) aux caractéristiques exceptionnelles de silence, de résistance et de légèreté. En combinaison avec nos profilés de la série GIPI, ils garantissent la même capacité de la gamme en acier.

Gama de carros autoportantes equipados con ruedas MAPAR (MATERIAL POLIAMIDICO DE ALTA RESISTENCIA) con características excepcionales de silenciosidad, resistencia y ligereza. Se puede combinar con nuestros perfiles de la serie GIPI para garantizar la misma capacidad de la gama de acero.

Ассортимент самонесущих тележек, оснащенных роликами MAPAR ПОЛИАМИДНЫЙ МАТЕРИАЛ ВЫСОКОЙ ПРОЧНОСТИ обеспечивает исключительную бесшумность, прочность и лёгкость. Хорошо совместим с нашими профилями серии GIPI и обеспечивает такую же несущую способность, как ассортимент из стали.

SILENZIOSITÀ

- SILENCE
- GERÄUSCHLOSIGKEIT
- SILENCE
- SILENCIOSIDAD
- БЕСШУМНОСТЬ



LEGGEREZZA ED EFFICIENZA

- LIGHTNESS AND EFFICIENCY
- LEICHTIGKEIT UND EFFIZIENZ
- LA LÉGÈRETÉ ET L'EFFICACITÉ
- LIGEREZA Y EFICENCIA
- ЛЁГКОСТЬ И ЭФФЕКТИВНОСТЬ



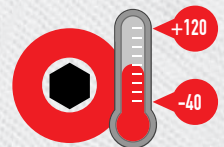
RESISTENZA ALLA CORROSIONE

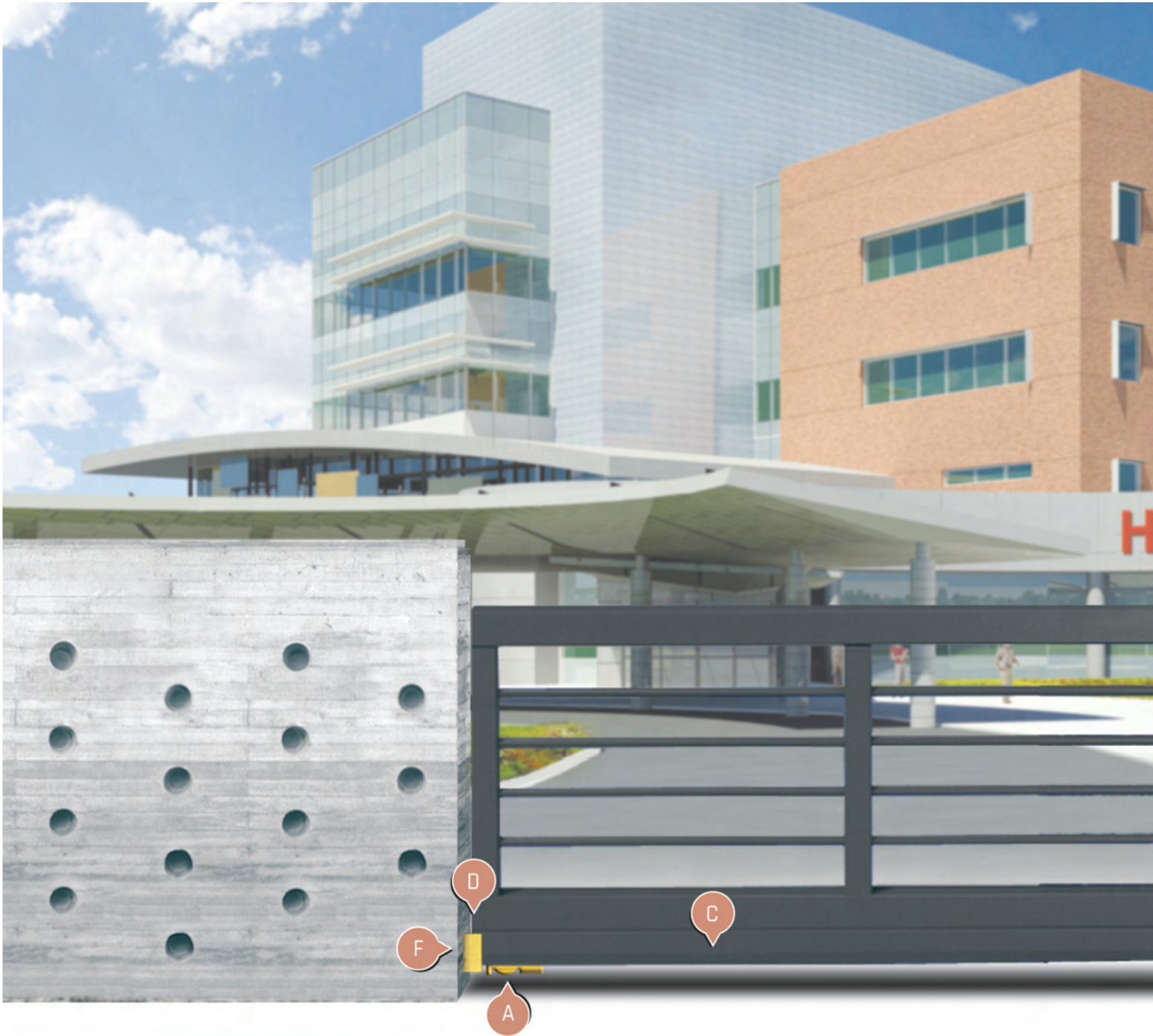
- CORROSION STRENGTH
- KORROSIONSBESTÄNDIGKEIT
- RÉSISTANCE À LA CORROSION
- RESISTENCIA A LA CORROSIÓN
- УСТОЙЧИВОСТЬ К КОРРОЗИИ



RESISTENZA ALLE TEMPERATURE

- TEMPERATURE STRENGTH
- THERMISCHER WIDERSTAND
- RÉSISTANCE AUX TEMPÉRATURES
- RESISTENCIA A LAS TEMPERATURAS
- УСТОЙЧИВОСТЬ У ТЕМПЕРАТУРАМ





A

- 41 B
- 41 B/SPEC
- 41 P
- 41 P/SPEC
- 41 H
- 41 H/SPEC
- 41 G
- 41 G/SPEC
- 41 G-A
- 41 MA SPEC

B

- 2 RP
- 4 RP
- 4 RM
- 4 RG
- 2 RG

C

- GIPI 4 RP / Z
- GIPI 5 RG / Z
- GIPI 4 RH / Z
- GIPI 6 RM / Z
- MA/6
- GA/6

D

- 153/B
- 153/P
- 153/G
- 153/H
- 153/MA

E

- PF/B
- PF/P
- PF/G

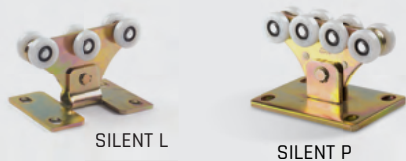


F



50 B
50 BL
50 P
50 PL
50 H
50 G
50 GL
50 R
50 RL

G

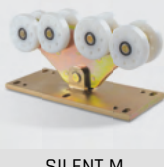


SILENT L

SILENT P



SILENT G

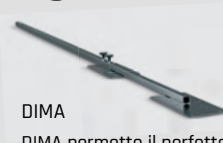


SILENT M



H 900 S

H



DIMA

DIMA permette il perfetto allineamento tra i 2 carrelli, eliminando ogni errore di montaggio.

DIMA enables the perfect alignment of the 2 carriages, thus eliminating any installation error

I

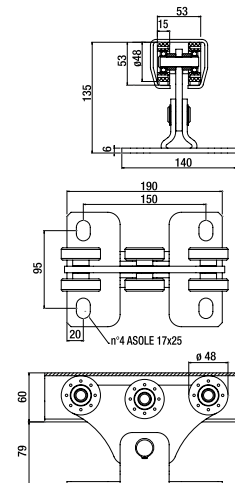


GLOECK



I Carrello "Leggero" per cancelli autoportanti

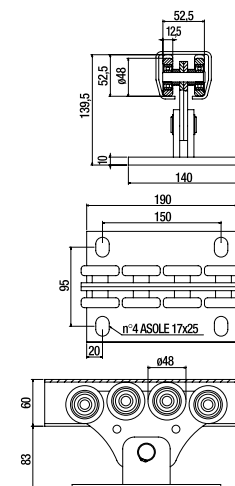
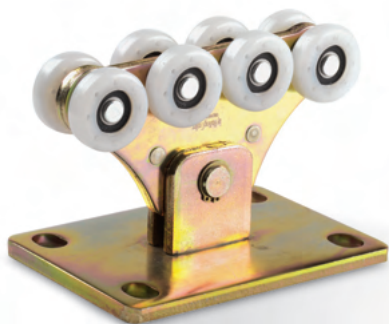
- UK "Leggero" carriage for cantilever gates
- D "Leggero" Rollenapparat für freitragende Schiebetore
- F Chariot "Leggero" pour portails autoportants
- E Carro "Leggero" para puertas autoportantes
- RUS Тележка «легкий» для раздвижных ворот со щетками



Articolo - Article		L1	Peso max cancello Gate max weight	Abbinabile Combining		
Riferimento - Reference	Max ML				N°	
SILENT L	LPZ 05 060	3,5	180	GIPI 4 RL / RLZ	2	5,16
SILENT L	LPZ 05 060	4	250	GIPI 4 RP / RPZ	2	5,16

I Carrello "Basic" per cancelli autoportanti

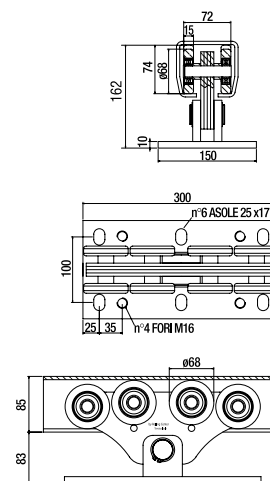
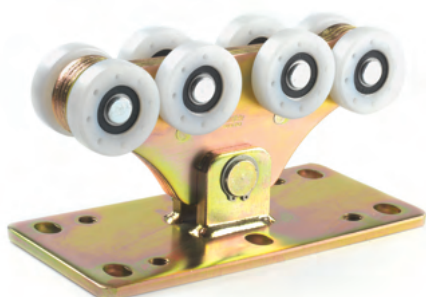
- UK "Basic" carriage for cantilever gates
- D "Basic" Rollenapparat für freitragende Schiebetore
- F Chariot "Basic" pour portails autoportants
- E Carro "Basic" para puertas autoportantes
- RUS Тележка для консольных сдвижных ворот базовая



Articolo - Article		L1	Peso max cancello Gate max weight	Abbinabile Combining		
Riferimento - Reference	Max ML				N°	
SILENT P	LPZ 05 080	6	450	GIPI 4 RP / RPZ	2	8,24

I Carrello "Medio" per cancelli autoportanti

- UK "Medio" carriage for cantilever gates
- D "Medio" Rollenapparat für freitragende Schiebetore
- F Chariot "Medio" pour portails autoportants
- E Carro "Medio" para puertas autoportantes
- RUS Средняя тележка для раздвижных ворот

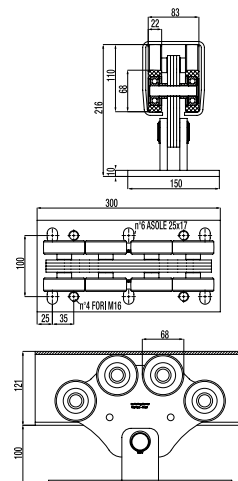
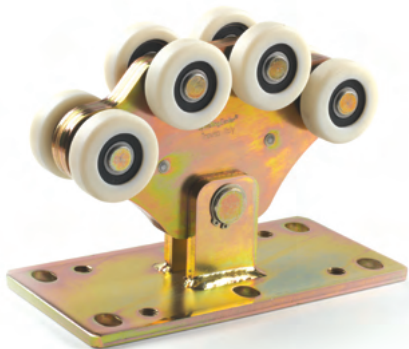


Articolo - Article		L1	Peso max cancello Gate max weight	Abbinabile Combining		
Riferimento - Reference	Max ML				N°	
SILENT G	LPZ 08 080	8	600	GIPI 5 RG / GZ	2	18,40



I Carrello "H900 S" per cancelli autoportanti

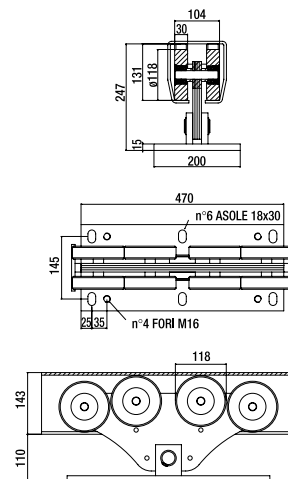
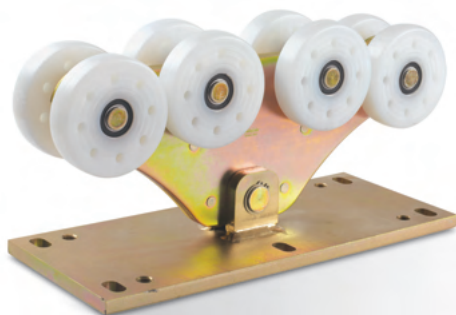
- UK "H900 S" carriage for cantilever gates
- D "H900 S" Rollenapparat für freitragende Schiebetore
- F Chariot "H900 S" pour portails autoportants
- E Carro "H900 S" para puertas autoportantes
- RUS Тележка «H900 S» для раздвижных ворот со щетками



Articolo - Article	L1	Peso max cancello Gate max weight	Abbinabile Combining	
Riferimento - Reference	Max ML			N°
H 900 S	LT 03 70 8M	10	900	GIPI 5 RH/HZ
				2 24

I Carrello "Magnum" per cancelli autoportanti

- UK "Magnum" carriage for cantilever gates
- D "Magnum" Rollenapparat für freitragende Schiebetore
- F Chariot "Magnum" pour portails autoportants
- E Carro "Magnum" para puertas autoportantes
- RUS Тележка «легкий» для раздвижных ворот со щетками



Articolo - Article	L1	Peso max cancello Gate max weight	Abbinabile Combining	
Riferimento - Reference	Max ML			N°
SILENT M	LP 01 20 80	16	1200	GIPI 6 RM/MZ / MA
				1 25,75



SUPER ~~SILENT~~ ALU

Serie di profili in alluminio GA e MA

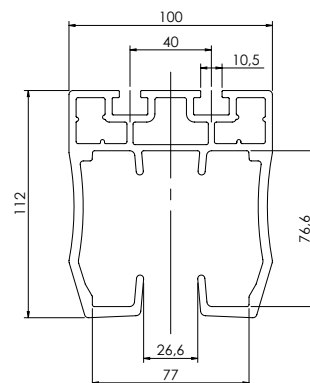
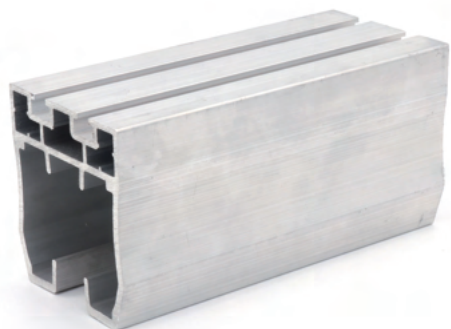
Series of aluminum profiles GA and MA

Aluminium-Profile der Serien GA und MA

Série de profilés aluminium GA et MA

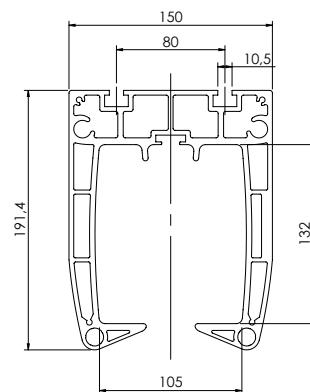
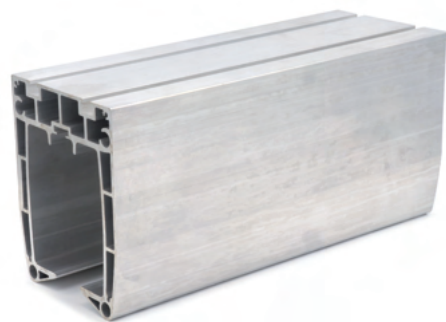
Serie de perfiles de aluminio GA y MA

Серия алюминиевых профилей GA и MA



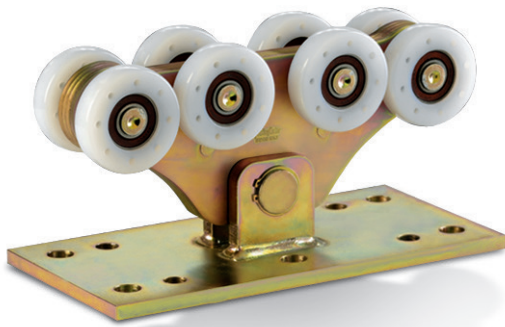
GA

Articolo - Article		Abbinabile Combinig	Descrizione Description	Fasci Sheafs		
Riferimento - Reference				ML	N°	Kg
GA/6	BA 10 11 00	CA4RSN	Alluminio naturale	6	-	38
GA/3	BA 10 11 03			3	-	19
53J	IZ 15 10 00	-	Spina di giunz. zincata	-	20	20



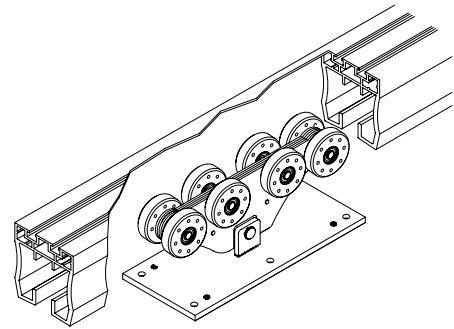
MA

Articolo - Article		Abbinabile Combinig	Descrizione Description	Fasci Sheafs		
Riferimento - Reference				ML	N°	Kg
MA/6	BA 15 19 00	SILENT M	Alluminio naturale	6	-	90,60
53	IT 13 10 00		Spina di giunz. zincata	-	20	2

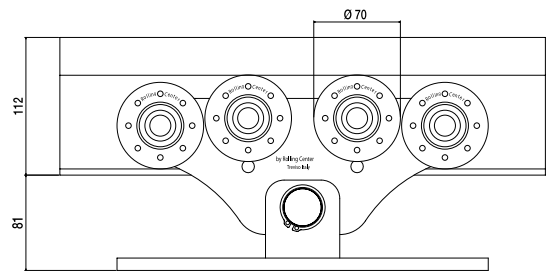
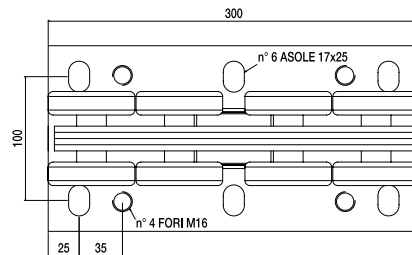
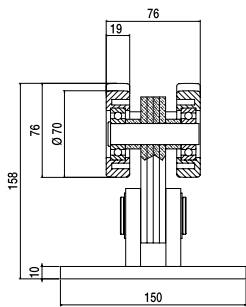


I Carrello per cancelli autoportanti con ruote in nylon per guida GA

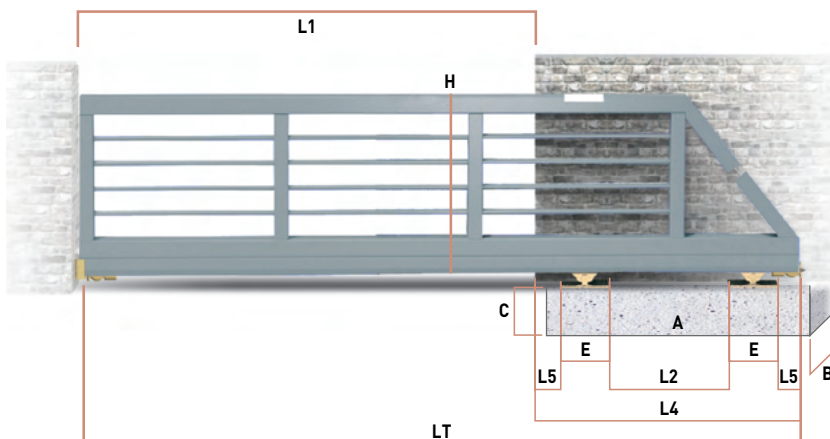
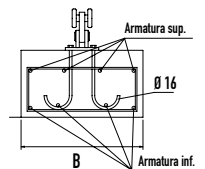
- UK Carriage for cantilever gates with nylon wheels for GA track
- D Rollenapparat für freitragende Schiebetore mit Nylon Rollen für die GA Schiene
- F Chariot pour portails autoportants avec roues en nylon pour le rail GA
- E Carro para puertas autoportantes con ruedas en nylon para el perfil GA
- RUS Тележка для раздвижных ворот с нейлополиамидными роликами направляющей GA



Articolo - Article		L1	Peso max cancello Gate max weight	Abbinabile Combining		
Riferimento - Reference		Max ML			N°	
CA 4 RSN	LP 00 80 80	6	350	Guida GA	2	18



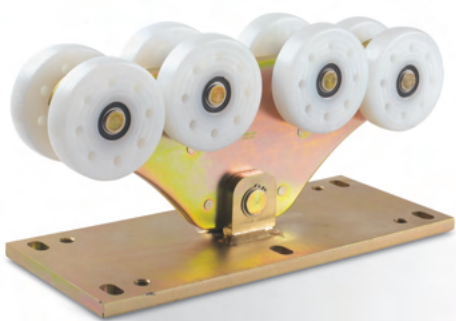
Peso max cancello Gate max weight	L1 (mt)	L2 (mt)	L4 (mt)	L5 (mt)	LT (mt)	H (mt)	E (mt)	A (mt)	B (mt)	C (mt)	Portata max carrello Carriage strength	Fondazione Armatura	
350	3,0	0,9	1,9	0,20	4,9	1,7	0,3	1,9	0,6	0,5	700	4 Ø 12	4 Ø 12
350	4,0	1,2	2,2	0,20	6,2	1,7	0,3	2,2	0,6	0,5	700	4 Ø 12	4 Ø 12
350	5,0	1,5	2,5	0,20	7,5	1,7	0,3	2,5	0,8	0,5	700	4 Ø 12	4 Ø 12
350	6,0	1,8	2,8	0,20	8,8	1,7	0,3	2,8	0,8	0,5	700	4 Ø 12	4 Ø 12



LT = L1+L4 L2 = 30% di L1 L4 = L2+(E+L5) x2

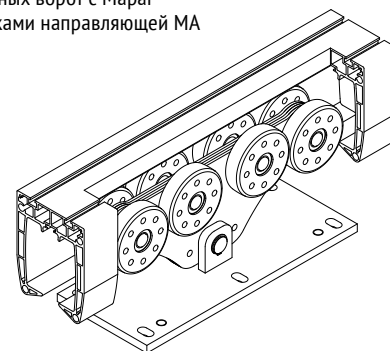
Accessori Abbinabili / Combining accessories

CA 4 RSN	x2	41 GA	x2
50 P	x2	GA/3 - GA/6	*
* Lunghezza guida variabile Variable track length			
4RM P	x2	Gloeck	x1

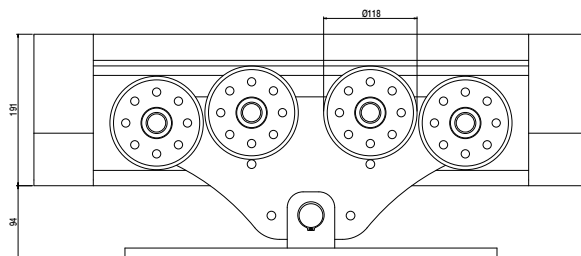
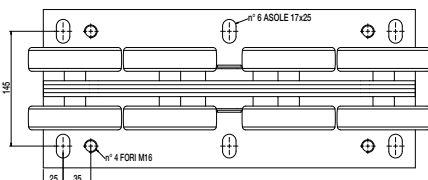
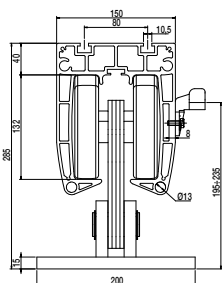


I Carrello per cancelli autoportanti con ruote in Mapar per guida MA

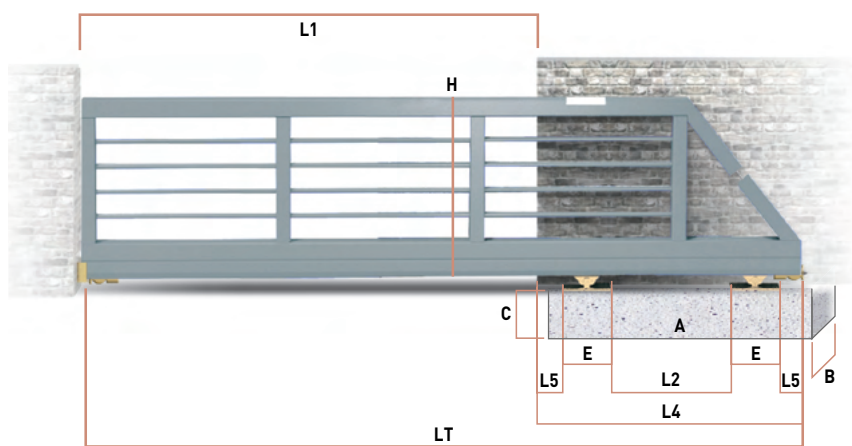
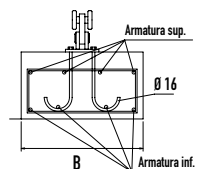
- UK** Carriage for cantilever gates with Mapar wheels for MA track
- D** Rollenapparat für freitragende Schiebetore mit Mapar Rollen für die MA Schiene
- F** Chariot pour portails autoportants avec roues en Mapar pour le rail MA
- E** Carro para puertas autoportantes con ruedas en Mapar para el perfil MA
- RUS** Тележка для раздвижных ворот с Mapar полиамидными роликами направляющей MA



Articolo - Article	L1	Peso max cancello Gate max weight	Abbinabile Combining	
Riferimento - Reference	Max ML			N°
SILENT M LP 012 080	16	1000	GIPI 6 RM/MZ / MA	1 25,75



Peso max cancello Gate max weight	L1 (mt)	L2 (mt)	L4 (mt)	L5 (mt)	LT (mt)	H (mt)	E (mt)	A (mt)	B (mt)	C (mt)	Portata max carrello Carriage strength	Fondazione Armatura	
1000	9,0	2,7	4,04	0,2	13,0	1,7	0,47	4,2	0,6	0,5	2400	6 Ø 12	4 Ø 12
1000	10,0	3,0	4,34	0,2	14,3	1,7	0,47	4,2	0,6	0,5	2400	6 Ø 12	4 Ø 12
1000	11,0	3,3	4,64	0,2	15,6	1,7	0,47	4,8	0,8	0,6	2400	7 Ø 12	4 Ø 12
1000	12,0	3,6	4,94	0,2	16,9	1,7	0,47	4,8	0,8	0,6	2400	7 Ø 12	4 Ø 12
1000	13,0	3,9	5,24	0,2	18,2	1,7	0,47	5,4	0,8	0,6	2400	9 Ø 12	4 Ø 12
1000	14,0	4,2	5,54	0,2	19,5	1,7	0,47	5,4	0,8	0,6	2400	9 Ø 12	4 Ø 12
1000	15,0	4,5	5,84	0,2	20,8	1,7	0,47	6	0,8	0,6	2400	10 Ø 12	4 Ø 12
1000	16,0	4,8	6,14	0,2	22,1	1,7	0,47	6,2	0,8	0,6	2400	10 Ø 12	4 Ø 12



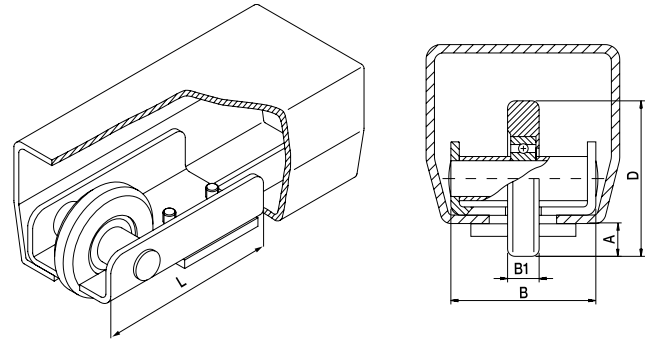
LT = L1+L4 L2 = 30% di L1 L4 = L2+(E+L5) x2

Accessori Abbinabili / Combining accessories

SILENT M x2	41 MA/SPEC x2 153/MA
50 GL x2	MA/6 x * Lunghezza guida variabile Variable track length
4RM P x2	Gloeck x1

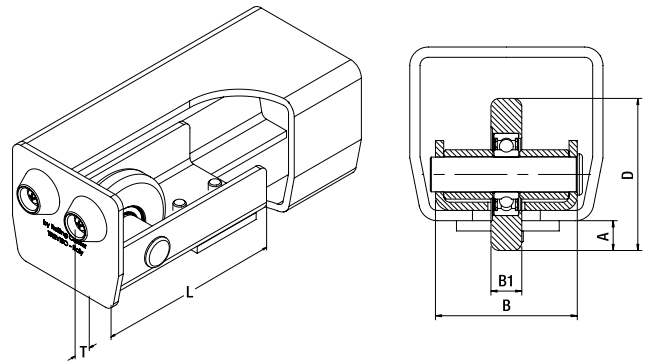


- I Ruota di sostegno
- UK Support wheel
- D Stützrad
- F Roue de support
- E Rueda de soporte con placa para atornillar
- RUS Ролик концевой



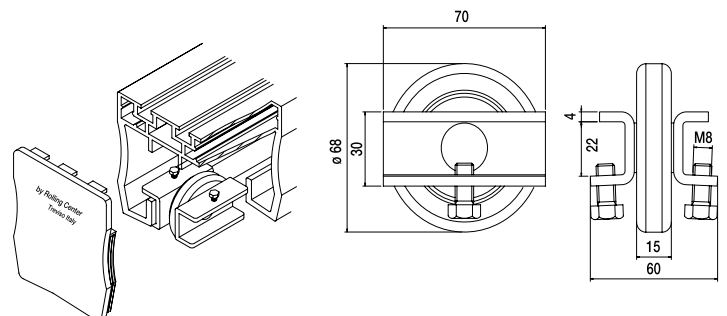
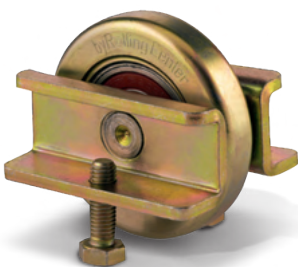
Articolo - Article		B	B1	L	A	D	Abbinabile Combining		
Riferimento - Reference		mm				∅		N'	
41 B	LT 00 50 10	50	15	132	13	68	GIPI 4RP/PZ	10	10,2
41 P	LT 00 74 10	69	15	132	14,5	74	GIPI 5RG/GZ	10	12
41 H	LT 00 80 10	80	23	135	17	78	GIPI 4RH/HZ	8	12,5
41 G	LT 00 98 10	106	30	190	18	98	GIPI 6RM/MZ	2	6,5
41 SM	LT 00 20 10	145	50	330	38	190	GIPI 4RSM	1	22,4

- I Ruota di sostegno con tappo
- UK Support wheel with cover
- D Stützrad mit Kappe
- F Roue de soutien à bouchon
- E Rueda Jockey con tapa
- RUS Опорное колесо с крышкой



Articolo - Article		B	B1	L	A	T	D	Abbinabile Combining		
Riferimento - Reference		mm					∅		N'	
41 B/SPEC	LT 00 50 11	50	15	132	13	12	68	GIPI 4RP/PZ	10	12
41 P/SPEC	LT 00 74 11	69	15	132	14,5	12	74	GIPI 5RG/GZ	8	11,3
41 H/SPEC	LT 00 80 11	80	23	135	17	-	78	GIPI 4RH/HZ	4	8,2
41 G/SPEC	LT 00 98 11	106	30	190	18	38	98	GIPI 6RM/MZ	2	8,46
41 MA/SPEC	LT 00 12 12	100	30	205	-	-	118	MA	2	16,5

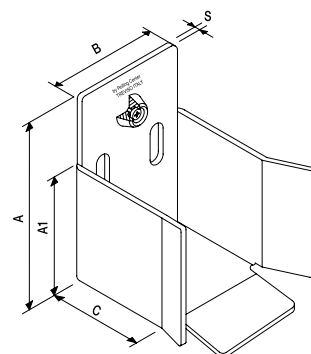
- I Ruota di sostegno per guida G-A
- UK Support wheel for G-A track
- D Stützrad für G-A Schiene
- F Roue de support pour rail G-A
- E Rueda de soporte para guía G-A
- RUS Опорное колесо для направляющей G-A



Articolo - Article			
Riferimento - Reference		N'	
41 GA	LT 00 55 10	10	6,5



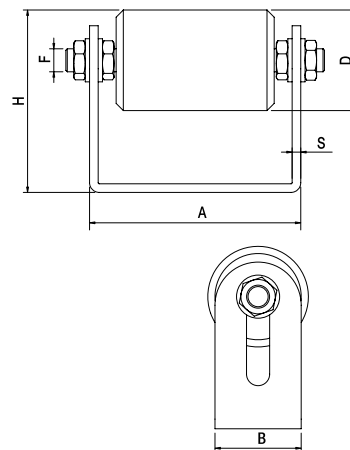
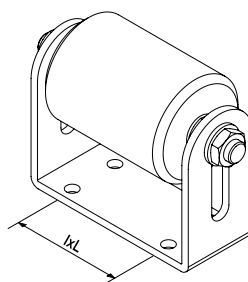
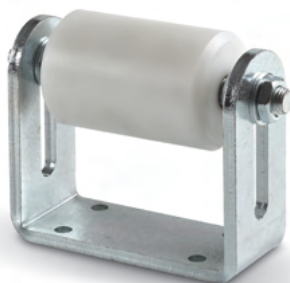
- I Incontro
- UK Meeting point
- D Führungsendstück
- F Butée
- E Punto de recepción
- RUS Ловушка



Articolo - Article		A	A1	B	C	S	Abbinabile Combining			
Riferimento - Reference		mm							N°	
50 B	FT 15 80 00	135	85	87	90	4	GIPI 4RP/PZ	2	2,4	
50 P	FT 16 10 00	161	100	112	90	4	GIPI 5RG/GZ/GA	5	8,4	
50 H	FT 16 12 00	165	95	120	85	4	GIPI 5RH/HZ	5	9	
50 G	FT 22 15 00	223	165	152	90	4	GIPI 6RM/MZ	2	5,6	
50 SM	FT 26 20 00	265	212	204	292	12	GIPI 4RSM	1	38,2	
50 BL	FT 11 11 00	110	85	108	153	4	GIPI4RP/PZ	2	3,9	
50 PL	FT 12 13 00	120	100	132	178	4	GIPI5RG/GZ/GA	2	5,3	
50 GL	FT 18 18 00	180	165	181	183	4	GIPI6RM/MZ/MA	2	8,8	

I Incontro regolabile a rullo per cancelli autoportanti

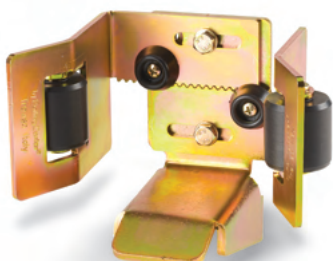
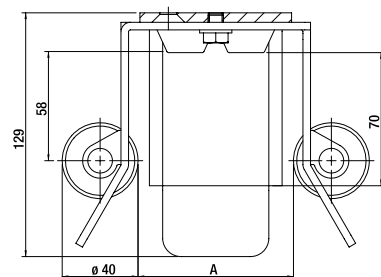
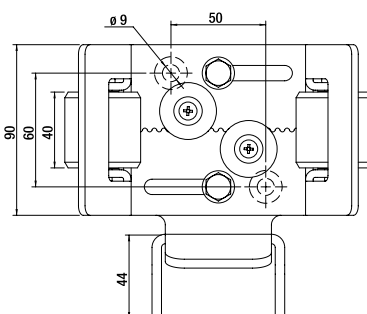
- UK Adjustable roller guide for cantilever gate
- D Einstellbare Rollscheine für freitragende Schiebtore
- F Guide réglable à rouleaux pour portails autoportants
- E Encuentro regulable por rollo para portones autoportantes
- RUS Регулируемая роликовая направляющая для раздвижных ворот



Articolo - Article		A	B	D	F	H	lxL	S		
Riferimento - Reference		mm							N°	
50 R	FT 14 70 00	147	60	70	M16	76+135	90x40 ø10	6	2	4
50 RM	FZ 20 70 00	220	65	70	Ø20	75	145x40 ø10	8	2	5,7

I Incontro inferiore regolabile con rulli nylon smontabile

- UK Bottom adjustable meeting point with removable nylon rollers
- D Unterer verstellbarer Einlaufschuh mit abmontierbaren Nylon Rollen
- F Butée inférieure réglable avec rouleaux nylon démontables
- E Soporte de encuentro bajo ajustable con rodillos nylon desmontables
- RUS Нижний регулируемый стык с роликами из нейлона, снимаемый

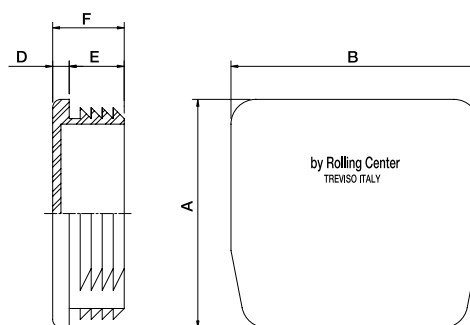


Articolo - Article		A	lxl	L		
Riferimento - Reference		mm			N°	
50 RL	FT9080RL	80+150	50x60	-	5	9,2



I Tappi in nylon per guide per cancelli

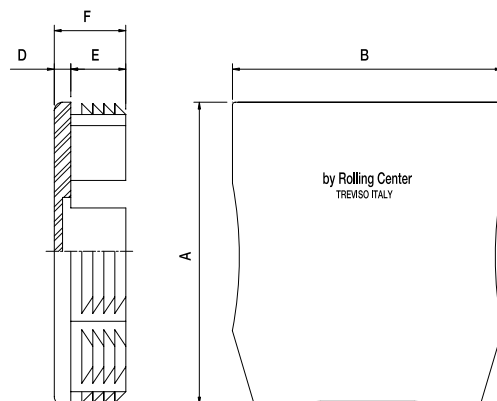
- UK Nylon caps for tracks closing
- D Nylonabschlusskappen für Schienen
- F Couvertcles Nylon pour fermeture des rails
- E Tapones en Nylon para guías para portones
- RUS Нейлоновая крышка направляющей для ворот



Articolo - Article		A	B	C	D	E	F	Abbinabile Combining		
Riferimento - Reference		mm							N°	
153/B	PN 70 60 00	58	68	56	6	20	26	GIPI 4 RP/RPZ	10	0,5
153/P	PN 94 87 00	83	90	79	6	20	26	GIPI 5 RG/GZ	10	1
153/G	PN 13 14 00	141	134	113	6	20	26	GIPI 6 RM/MG	4	0,5

I Tappi in nylon per guida in alluminio G-A

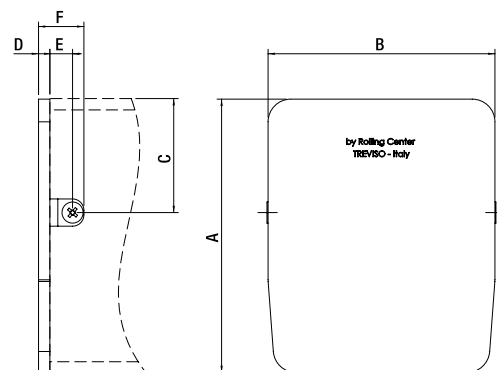
- UK Nylon caps for aluminium track G-A
- D Nylonabschlusskappen für Aluminium Schiene G-A
- F Couvertcles Nylon pour rail aluminium G-A
- E Tapones en Nylon para guías en aluminium G-A
- RUS Нейлоновая крышка для алюминиевой направляющей G-A



Articolo - Article		A	B	C	D	E	F	Abbinabile Combining		
Riferimento - Reference		mm							N°	
153/GA	PN 10 11 A0	110	98	82	6	20	26	G-A	10	1

I Tappo in acciaio per guida GIPI5RH

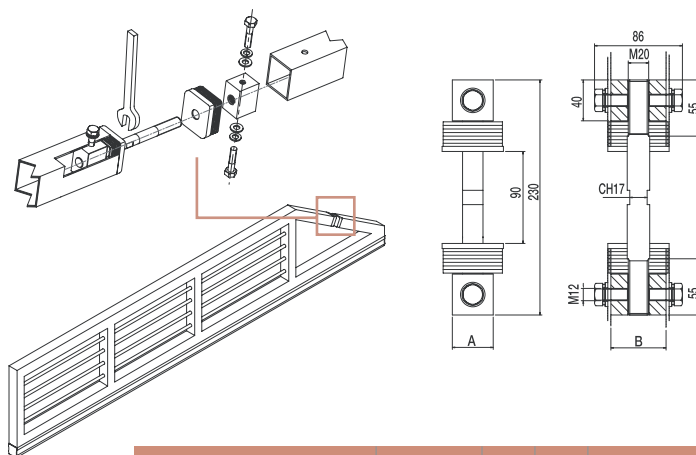
- UK Steel cap for GIPI5RH track
- D Stahldeckel für GIPI5RH Schiene
- F Bouchon acier pour rail GIPI5RH
- E Tapa acero para perfil GIPI5RH
- RUS Пробка стали для направляющей GIPI5RH



Articolo - Article		A	B	C	D	E	F	Abbinabile Combining		
Riferimento - Reference		mm							N°	
153/H	PT 12 10 00	120	100	50	5	10	20	GIPI 5 RH/HZ	10	5

I Tirante Gloeck

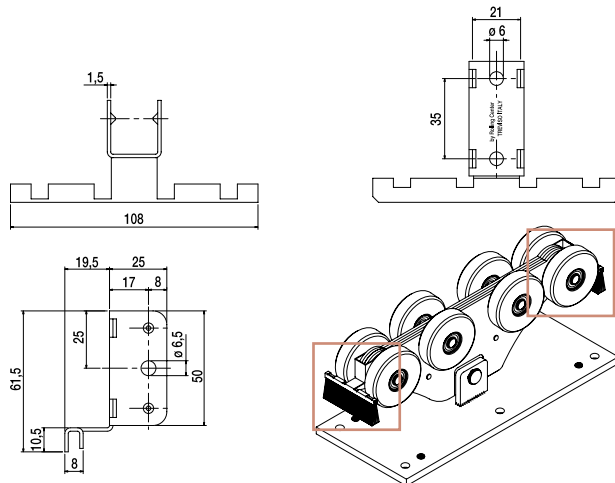
- UK Tension rod Gloeck
- D Spannvorrichtung Gloeck
- F Tirant Gloeck
- E Barra Gloeck de la tensión
- RUS Растяжка Gloeck



Articolo - Article		Tubolare LxHxS	A	B		
Riferimento - Reference		mm		∅	N°	
GLOECK	II 22 23 T0	60x60x3	40	54	5	9,2
NEW GLOECK 40	II 22 23 T4	40x40x2,5	35	35	5	5,8
GLOECK 4060	II 22 23 T46	40x60x2,5	35	35	5	5,8

I Portaspazzolino completo per carrello MAGNUM

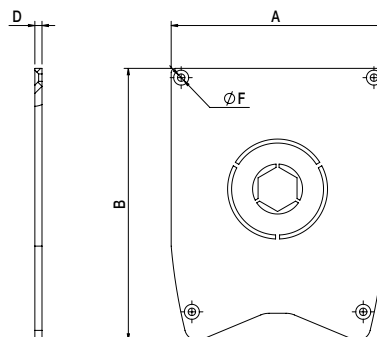
- UK Brush holder for MAGNUM carriage
- D Buerste - Scraper fuer MAGNUM rollwagen
- F Porte - brosse pour chariot MAGNUM
- E Cepillar - sostenedor para el MAGNUM carro
- RUS Комплект держателей щеток для тележек «Магнум»



Articolo - Article			
Riferimento - Reference		N°	
85 G	ST 10 20 W0	10	0,8

I Tappo in alluminio per guida MA

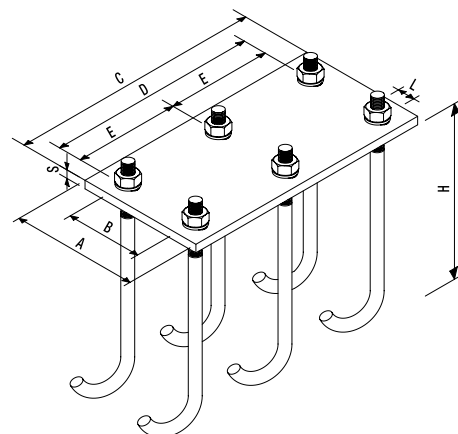
- UK Aluminium cap for MA track
- D Aluminium Abschlusskappen für MA Profil
- F Couverture aluminium pour rail MA
- E Tapa aluminio para perfil MA
- RUS Алюминиевая заглушка для направляющей MA



Articolo - Article		A	B	D	F		
Riferimento - Reference		mm		∅	N°		
153/MA	PA 19 15 M0	149	190,4	5	5,2	10	3,5

I Kit di fissaggio a cementare per carrelli autoportanti

- UK Case-hardening fixing kit for cantilever carriages
- D Befestigungsausstattung für freitragende Schiebtore
- F Set de fixation à cimenter pour chariots autoportants
- E Kit de montaje para cementar para cancelas autoportantes
- RUS Набор для фиксации в цементе для автоматических раздвижных ворот



Articolo - Article		A	B	C	D	E	H	L	S	📦	
Riferimento - Reference		mm								N°	👤
PF/B	PT 14 19 FO	140	95	190	150	-	250	M16	2	4	16
PF/P	PT 15 30 FO	150	100	300	250	125	250	M16	2	4	16
PF/G	PT 20 47 FO	200	145	470	420	210	250	M16	2	4	20

DIMA

I DIMA permette il perfetto allineamento tra i 2 carrelli, eliminando così ogni errore di montaggio, posizionando alla giusta distanza gli ancoranti annegati nella fondazione.

- UK DIMA enables the perfect alignment of the 2 carriages, thus eliminating any installation error, positioning the anchors in the cement foundations at proper distance.
- D Dima ermöglicht die perfekte Anreihung der 2 Wagen, ohne Installierungsfehler durch Fixierung der Befestigungen in den Grundlagen auf geeigneter Entfernung.
- F DIMA permet un alignement parfait entre 2 chariots, le placement des étaux à une distance donnée dans le ciment et l'effacement de toute faute de montage.
- E DIMA permite el perfecto alineamiento entre los 2 carretillos, eliminando, de esta forma, todo error de montaje, colocando en la adecuada distancia los elementos que ahogan en la base.
- RUS DIMA позволяет превосходное выравнивание между двумя тележками, устраняя ошибки монтажа, привязывая на правильном расстоянии крепления, утопленные в основание.



Articolo - Article		A	E	L	L1	L2	Apertura regolabile I	📦	
Riferimento - Reference		mm						N°	👤
DIMA 1	PZ 30 00 00	470	200	3000	3225	3700	0 ÷ 5000	1	15

