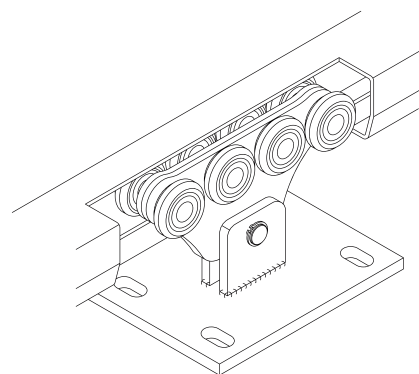
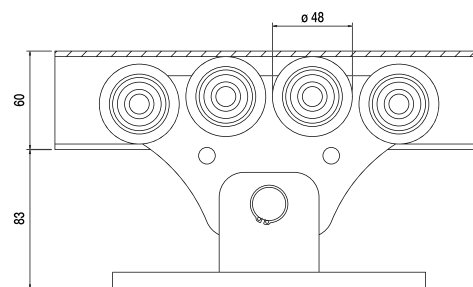
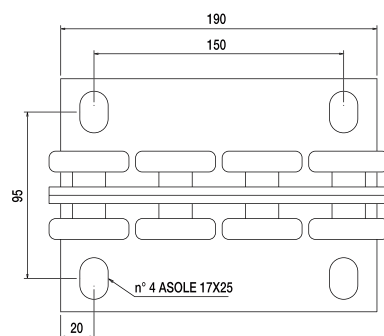
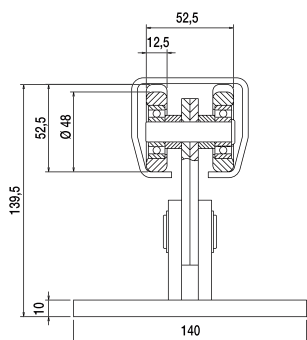




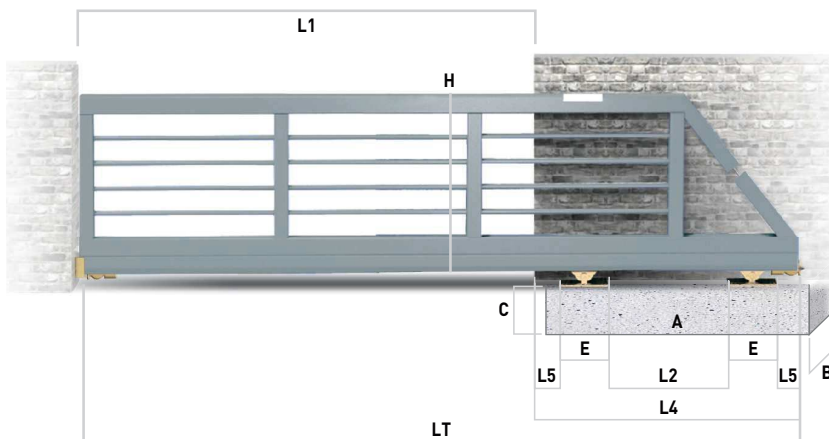
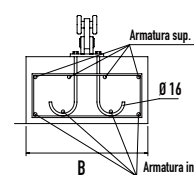
- I Carrello "Basic" per cancelli autoportanti
- UK "Basic" carriage for cantilever gates
- D "Basic" Rollenapparat für freitragende Schiebetore
- F Chariot "Basic" pour portails autoportants
- E Carro "Basic" para puertas autoportantes
- RUS Тележка для консольных сдвижных ворот базовая



Articolo - Article	L1	Peso max cancello Gate max weight	Abbinabile Combining	
Riferimento - Reference	Max ML			N°
CA 4 RPSI	LI 00 50 80	3 - 6 450 kg	GIPI 4 RLI	2 9,58



Peso max cancello Gate max weight	L1 (mt)	L2 (mt)	L4 (mt)	L5 (mt)	LT (mt)	H (mt)	E (mt)	A (mt)	B (mt)	C (mt)	Portata max carrello Carriage strength	Fondazione Armatura
450 kg	3,0	0,9	1,66	0,20	4,7	1,7	0,19	1,8	0,6	0,5	900 kg	4 Ø 12 4 Ø 12
450 kg	4,0	1,2	1,96	0,20	6,0	1,7	0,19	2	0,6	0,5	900 kg	4 Ø 12 4 Ø 12
450 kg	5,0	1,5	2,26	0,20	7,3	1,7	0,19	2,3	0,8	0,5	900 kg	4 Ø 12 4 Ø 12
450 kg	6,0	1,8	2,56	0,20	8,6	1,7	0,19	2,6	0,8	0,5	900 kg	4 Ø 12 4 Ø 12



**Accessori Abbinabili / Combining accessories**

CA 4 RPSI  x2	41 BI  x2
50 BI  x2	GIPI 4 RLI  *
4 RM I - 4 RMP I  x2	sp. 3 mm th. 3 mm * Lunghezza guida variabile Variable track length

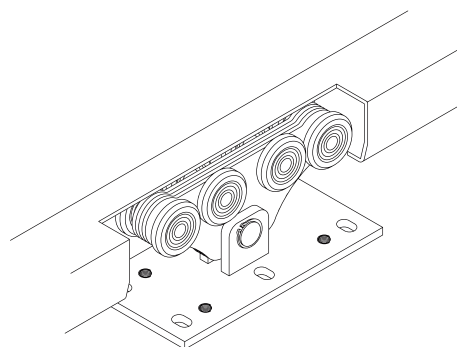
LT = L1+L4

L2 = 30% di L1

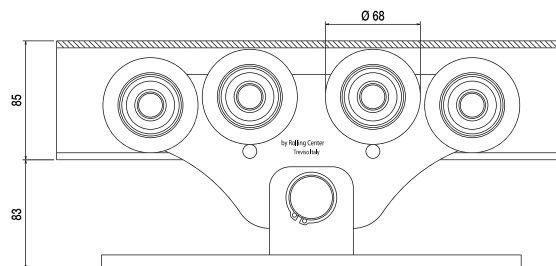
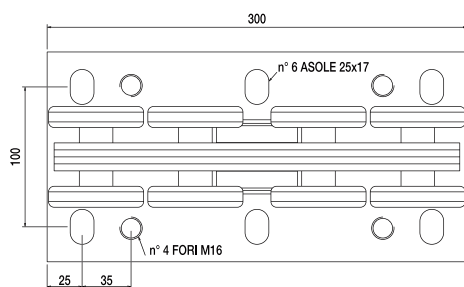
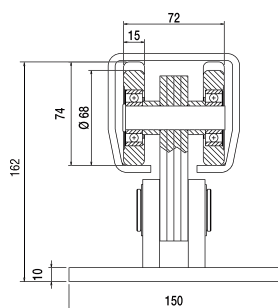
L4 = L2+(E+L5) x2



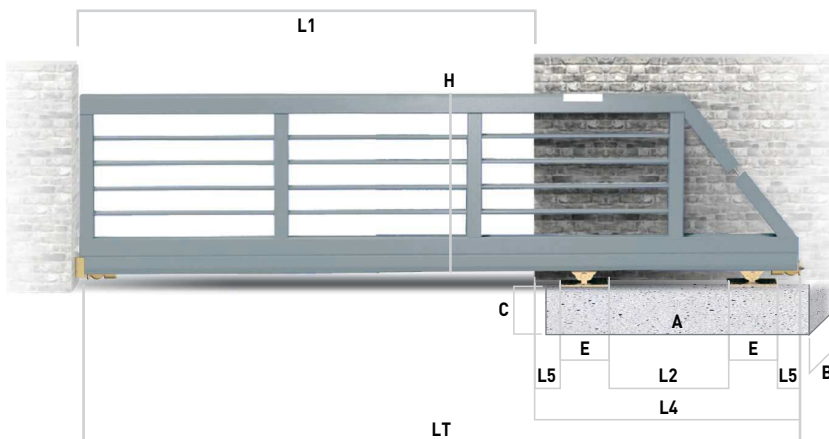
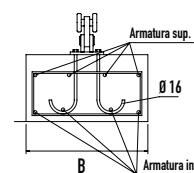
- I Carrello "Medio" per cancelli autoportanti
- UK "Medio" carriage for cantilever gates
- D "Medio" Rollenapparat für freitragende Schiebetore
- F Chariot "Medio" pour portails autoportants
- E Carro "Medio" para puertas autoportantes
- RUS Средняя тележка для раздвижных ворот



Articolo - Article	L1	Peso max cancello Gate max weight	Abbinabile Combining	
Riferimento - Reference	Max ML			N°
CA 4 RS I	LI 00 80 80	8 600	GIPI 4 RGI	2 21



Peso max cancello Gate max weight	L1 (mt)	L2 (mt)	L4 (mt)	L5 (mt)	LT (mt)	H (mt)	E (mt)	A (mt)	B (mt)	C (mt)	Portata max carrello Carriage strength	Fondazione Armatura	
600	4,0	1,20	2,2	0,2	6,2	1,7	0,3	2,5	0,6	0,5	1200	4 Ø 12	4 Ø 12
600	5,0	1,50	2,5	0,2	7,5	1,7	0,3	2,8	0,6	0,5	1200	4 Ø 12	4 Ø 12
600	6,0	1,80	2,8	0,2	8,8	1,7	0,3	3,2	0,6	0,5	1200	4 Ø 12	4 Ø 12
600	7,0	2,10	3,1	0,2	10,1	1,7	0,3	3,7	0,6	0,5	1200	7 Ø 12	4 Ø 12
600	8,0	2,40	3,4	0,2	11,4	1,7	0,3	3,7	0,6	0,5	1200	7 Ø 12	4 Ø 12



### Accessori Abbinabili / Combining accessories

CA4RS I  x2	41 P I  x2
50 P I  x2	GIPI 4 RGI  *
4RM I  x2	* Lunghezza guida variabile Variable track length

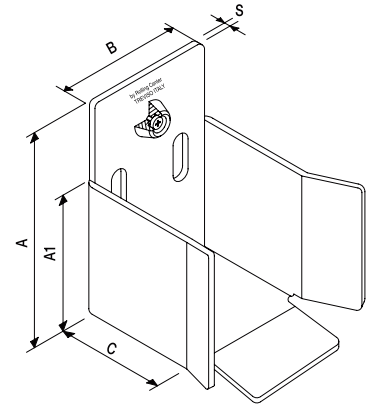
$LT = L1 + L4$

$L2 = 30\% \text{ di } L1$

$L4 = L2 + (E + L5) \times 2$

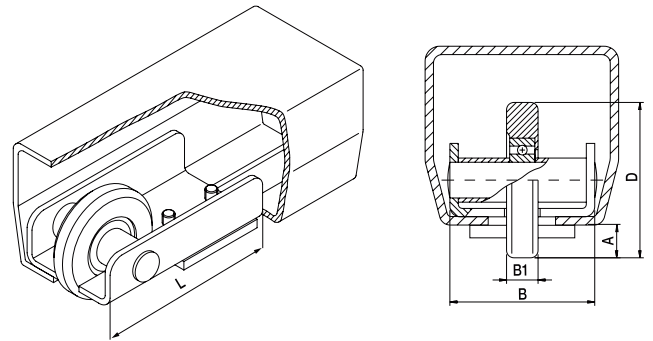
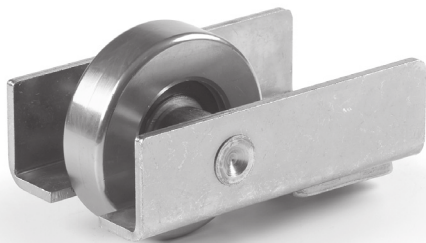


- I Incontro
- UK Meeting point
- D Führungsendstück
- F Butée
- E Punto de recepción
- RUS Ловушка



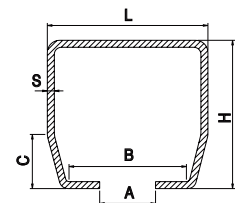
Articolo - Article		A	A1	B	C	S	Abbinabile Combining			
Riferimento - Reference		mm							N°	
50 B I	FI 15 80 00	135	85	87	90	4	GIPI 4 RPI	2	2,4	
50 P I	FI 16 10 00	161	96	112	82	4	GIPI 4 RGI	5	8,4	

- I Ruota di sostegno
- UK Support wheel
- D Stützrad
- F Roue de support
- E Rueda de soporte con placa para atornillar
- RUS Ролик концевой



Articolo - Article		B	B1	L	A	D	Abbinabile Combining			
Riferimento - Reference		mm					∅		N°	
41 B I	LI 00 50 10	50	15	132	13	68	GIPI 4 RPI	10	12	
41 P I	LI 00 74 10	69	15	132	14,5	74	GIPI 4 RGI	10	12	

- I Guida per cancelli scorrevoli autoportanti
- UK Guide for sliding cantilever gates
- D Profilschiene für freitragende Schiebetore
- F Rail pour portail suspendu
- E Correderas autoportantes
- RUS Балка несущая для сдвижных ворот



Tipo Type	Articolo - Article		Abbinabile Combining	L	H	A	B	C	S	Finitura Description	Fasci Sheafs	
	Riferimento - Reference			mm							ML	
	GIPI 4 RLI 3	BI 69 59 03	CA 4 RPSI	69	59	22	52,5	25	3	Inox da ML 3	96	458
	GIPI 4 RLI 6	BI 69 59 00	CA 4 RPSI	69	59	22	52,5	25	3	Inox da ML 6	192	916
	GIPI 4 RGI 3	BI 94 87 03	CA 4 RSI	94	85	33	73	30	5	Inox da ML 3	60	714
	GIPI 4 RGI 6	BI 94 87 06	CA 4 RSI	94	85	33	73	30	5	Inox da ML 6	120	1428